

EAST COAST HYDRAULICS

9 SAGONA

THE HYDRAULIC CYLINDER SHOP

Green Line

HOSE & FITTINGS

MAIN OFFICE

# EAST COAST HYDRAULICS

HYDRAULICS | HOSE & FITTINGS | CYLINDERS

SIR WILFRED GRENFELL

LEONARD J COWLEY

FLANDERS

**2022 - 2023**

Service & Equipment Catalogue

ISO 9001:2015 Registered

Newfoundland Owned and Operated



Catalogue Design, Layout & Photography produced by; DJ Sweetland  
djsweetland@hotmail.com

## About us

East Coast Hydraulics has been in the hydraulic business for over 40 years. We take great pride in our work, and the knowledge we possess within the field. The company of 20 plus employees is ready to help out in any capacity that it can as we are working in almost every business sector imaginable. We offer a high level of quality products and service and we are dedicated to being ready to help our customers that are both planning future work and those that need immediate attention. We offer hydraulic design, fabrication, trouble shooting, Shop, Mobile and Technical services, and sales.

Gerald Robinson Sr, company President has as much hydraulic experience as anyone you will ever meet. His company is 100 % Newfoundland and Labrador owned and operated. East Coast Hydraulics is an ISO 9001:2015 Registered Company, and operates to those standards.

## Design and Fabrication

### **Fabrication:**

We can advance your project from the design stage to the fabrication stage. With either fabrication in our own shop from raw material, or from procuring the components from any of our reputable suppliers, we can physically build the system after the consultation and drawing stages.

### **Testing & Certification:**

After fabrication we can test the system in house and offer full certification based on the criteria established in the consultation and design stages.

### **Coating and Finishing:**

After completion, we can offer you whatever finishing and coating pre-arranged in the consultation stage that you wish to have applied to your design.

### **Design Consultation:**

Let us help determine what hydraulic package is right for you. Give us a call and with our experience and expertise we'll listen first then ask all the necessary questions and help determine what design service is right for you.

### **Schematic Drawing:**

A schematic, or schematic diagram, is a representation of the elements of a system using the industry graphic symbols. Meet with us and we can both design the system and take the idea you have to the next stage of development.



## Shop Services

With 40 plus years of being in the Hydraulic Industry we pride ourselves on the quality service work we offer. Headed by Rod Tibbo, our Service Manager, our service centre is complete with Certified Hydraulic Technicians that have all the experience and expertise necessary to complete the job scope that you request.

### 3 Full Service Bays & 3200 Sq ft. Warehouse

Our service bays are complete service centres, the 5 ton cranes allow for safe and efficient lifting of heavy equipment, the technicians have plenty of space to work properly out of the elements to complete your repair properly.

### Custom Test Stand

Our 150HP test stand allows for complete operation of customer components to ensure they're meeting the proper standards and specifications.

### Flushing Units

Our in shop flushing unit allows us to condition your oil to a cleanliness level that you choose, we also have mobile flushing units to allow for mobile use.

### Dehydration Unit

Our Hydac<sup>TM</sup> FAMH dehydration unit allows us to remove both free-standing and saturated water from your hydraulic system, it is an offline system that allows for use while your system is in operation or while not in use.

### Pressure Chamber

Our pressure chamber is used to test hydraulic lines up to 20,000 psi, so that the hose can be certified for use to the standard you require.

### Complete Hose & Fittings Centre

Our hose and fittings department has a full compliment of carbon and stainless steel fittings offered in both standard and metric sizes. Our shop carries more inventory than any other vendor on the island and has another 17 locations that our re-selling partners offer the same products.

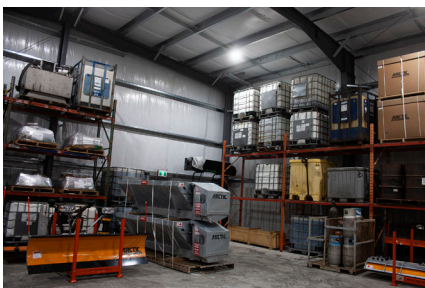
### Complete Cylinder Shop

Our Cylinder shop is complete with 2 technicians with over 40 years of experience in cylinder repair – complete with 4 lathes and the only Tuxco<sup>TM</sup> Cylinder Repair Bench in the province.

### Machine Shop & Fabrication Shop

Our service centre includes equipment and personnel to fabricate parts or components necessary for some repairs Room for inside work on boom trucks, dump truck, excavators, and more.

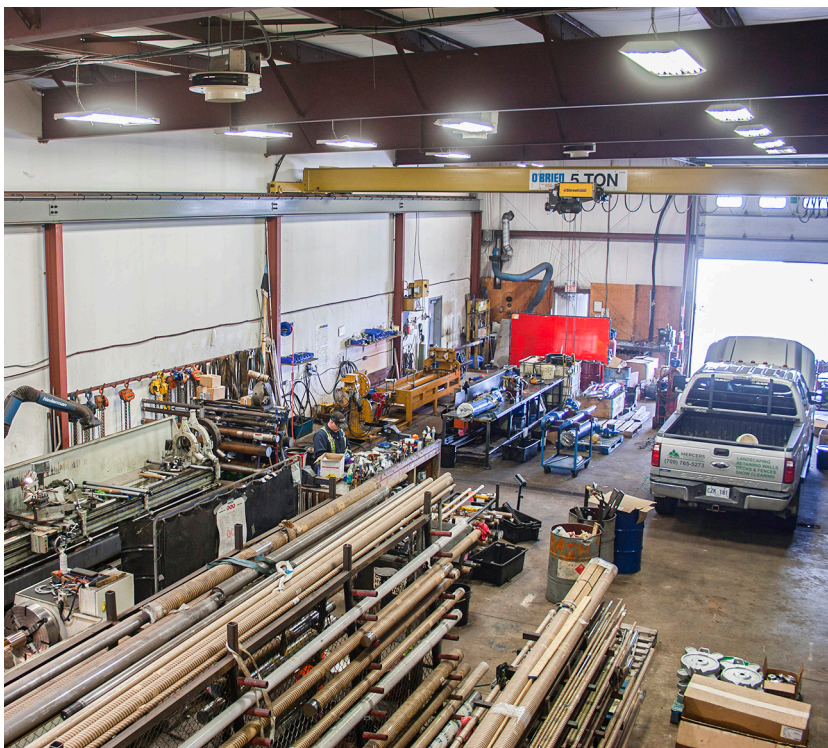
We have a +2 acre laydown yard and work yard for working on larger equipment, or for quick turnaround for units that need to get back to their worksite. Our bay doors open directly to our yard which allows full access to all of our tools and equipment.



# EAST COAST HYDRAULICS

HYDRAULICS | HOSE & FITTINGS | CYLINDERS

## 3 Service Bays



## Mobile Services

For those jobs that require us to come to you we are completely prepared. Whether you are around the corner or in another province or country, we have a long history of hitting the road to service our customers.

### Fishing Vessels

East Coast Hydraulics has a long standing relationship with those which make a livelihood from the fishing industry. Whatever your need is we have two locations and our mobile services to keep your vessel and equipment ready to ensure you have hassle free trips out to catch your quota.

### Shipyard Services

East Coast Hydraulics has a long history of working with Shipyards to complete their work scope for customers. Many shipyards bid work that includes expansive hydraulic scopes of work as well as their regular refit work, and we have been working alongside yards such as Newdock's St. John's Dockyard, Glovertown Shipyard, and in the Port of Lewisporte Newfoundland for many years. Specializing in hydraulic trouble shooting, installations, and repairs we can help in all stages of the yards work, including quoting on jobs for bidding purposes to equipment and component shop testing and sea trials. We also have a fleet of rental equipment available for Shipyards when the time comes that the yard themselves do not have enough of or that specific equipment within their own fleet.

### Plant Equipment

Process and Production equipment such as hydraulic presses, assembly line conveyors, ramps, lifts, roller systems and hydraulic jacks can all be addressed through our mobile service center. Some customers with fixed equipment and that we have serviced include the Marine Institute and their Hydraulic Simulators, the National Research Center and their wave tanks, and Scotia Recycling and their Bailer system for recycled materials. Schlumberger and Newfoundland Liquor Corp include other customers with unique in-house equipment. We also can provide filter change-outs and Technical Services such as oil sampling.

### Offshore Oil & Gas Services

East Coast Hydraulics offers service to those requiring special needs for equipment that will be used in the Offshore Oil & Gas Sector, equipment to be used sub sea, and mobilization and de-mobilization services during equipment installation aboard vessels heading offshore. Whether Transport Canada or Class need to be involved, we have been working with both national and international customers to meet whatever standards and regulations are required to ensure that the equipment either we supply or the customer supplies is safe and ready for operation once at sea. We offer a variety of inspection and certification services, and when necessary we will partner with other local inspection and integrity service companies to complete the required tasks.

### Subsea Services

For equipment going subsea, we can also work with the customer to modify existing equipment or design, fabricate, and test new equipment that will be working at both shallow and great depths beneath the ocean's surface. Hydraulics Specifications can change with water temperature as well ROV equipment can require special needs to work properly subsea.

### Mainland Services

We have a history of going the extra mile to service our customers both figuratively and literally. Is your job happening out of our Newfoundland borders, if so, don't hesitate to ask if we can still be made available. We have traveled from Nunavut to Panama to service customer hydraulic needs.



## Mobile Services

### Mobile Equipment

Working on a job on site and cannot get the equipment moved, downtime is a part of everyone's business, unexpected and costly, we can attend your work site and help hydraulically.

### Mobilizations

We offer services from every stage of an offshore program:

- Consultation with the customer on equipment requirements
- Ship's equipment layout
- Inspection and testing of ship's provided hydraulic system
- Meeting regulations
- Equipment Rental
- Equipment Fabrication
- Mobilization aboard vessel
- Proof Testing
- Offshore Technician I Operator Services
- De-mobilization
- Post Program Debriefing



### Marine Services

Our business was built on the water, some of our longest tenured customers are marine industry related. Our experience on that which floats is unparalleled in the hydraulics sector. From bow thruster to steering, anchor windlass to FiFi, and every part in between we are ready to help. If you are a Ships Broker do not hesitate to contact us to help with any foreign vessel that may be coming to our waters.



## Technical Services

East Coast Hydraulics offers a variety of technical services:

### Load Testing Services:

Certified Load Cell and Rigging to perform load tests.

### Certifications:

Certifications – pressure and cleanliness, Testing for hydraulic flow, pressure, temperature.

### Other Services:

- Hose Management
- Pressure Testing
- Flushing of systems and Flushing of Oil to ISO 1 NAS specifications
- Schematic design & drawing
- Dehydration of system
- Test Stand Services
- Tube Bending
- Filtrated Fluid transfers

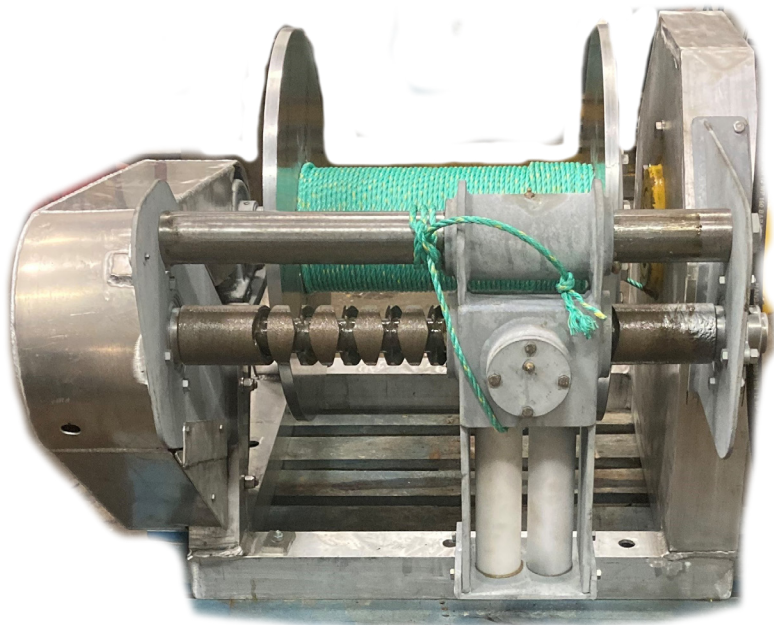
## Customer Specified Requests



# EAST COAST HYDRAULICS

HYDRAULICS | HOSE & FITTINGS | CYLINDERS





# EAST COAST HYDRAULICS

HYDRAULICS | HOSE & FITTINGS | CYLINDERS

## Our Showroom



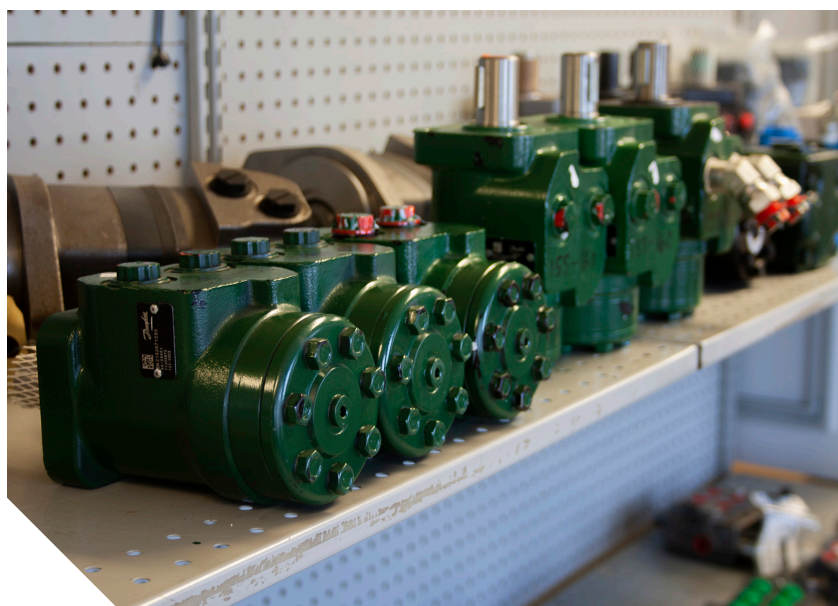
Reliable, efficient, and fully stocked. Here at East Coast Hydraulics we take great pride in our work and service to all our valued customers. Our showroom and service counter will have exactly what you need or what you need to know for the job ahead.

Our walls and shelves are filled with the latest lineups of the best hydraulic equipment on the market for on and offshore applications.

The Service counter at the head of our store will always have a service representative for customer questions, repair or order.

Feel free to drop by anytime to browse our selection or for any of your hydraulic needs!







# EQUIPMENT COMPONENTS ACCESSORIES

## Mobile and Ocean Going

East Coast Hydraulics offers a full lineup of Deck Equipment, suitable for many, if not all offshore Hydraulic Hauling applications.



## Diagnostic Equipment

**KAPS / KAPF - Hydraulic Pressure Switch:**

The KAPS/KAPF is a piston pressure switch featuring an external adjustment knob to quickly adjust set point. The switch is IP67 rated, enabling high performance in most outdoor conditions. It is excellent for hydraulic applications with long cycle life.

- Pressure Adjustment Range: 350 - 3200 psi
- Maximum Overpressure: 15000 psi
- Switch Type: Micro switch
- Electrical: 5A, 10A

**TT - TEMPERATURE TRANSDUCER:**

The TT is a robust temperature transmitter designed for measuring temperature in hydraulic applications. The two sensing element options, solid state (standard) and PT1000 offers versatility for performance and price. The sensor provides an analog 4 to 20 mA output. The TT series is ideal for harsh environmental conditions.

- Temperature Range: -25C to 100C , 0C to 100C , 0F to 300F
- Output Signal : 4 to 20 mA
- Chrome plating

## LPA3 Portable Particle Counter



MP Filtri's next-generation LPA3 delivers a fast, accurate and comprehensive hydraulic health check in a robust yet portable package. Featuring the latest breakthroughs in optical and photodiode technology, the new LPA3 enhances the reliability and longevity of complex hydraulic systems and reduces costs and unplanned downtime.

## Gauges



MPG Series Liquid Filled  
Gauges-2 1/2" and 4"

Stem and Back Mount

MPD Series Dry Gauges

Custom Dials available

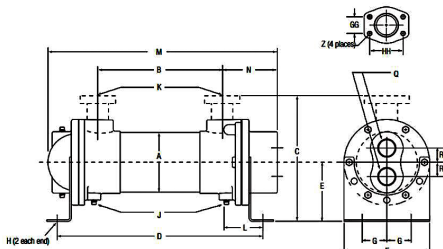


## Test Point

These Test Point Plugs are designed to be complementary to and interchangeable with similar equipment from other manufacturers using DIN 2353 standards. Plugs are installed into the hydraulic system hardware and are used in conjunction with DIN 2353 Pressure Test Probe equipment.



## Double Bypass Cooling



Flange Size	GG	HH	Z-CF	Z-CFM
1	1.03	2.06	3/8 - 16 UNC	M - 10
1.50	1.41	2.75	1/2 - 13 UNC	M - 12
2	1.69	3.06	1/2 - 13 UNC	M - 12
3	2.44	4.19	5/8 - 11 UNC	M - 16

- Young Touchstone thermal interchange
- Competitively priced
- 1/4" or 3/8" tubes available
- Water to water applications
- Sea water applications

### Ratings:

**Maximum Shell Pressure:** 250psi

**Maximum Tube Side:** 150 psi

**Maximum Temperature:** 350°F

## Accumulators



Bottom repairable  
3000 PSI  
Type S3  
Bladder Kits  
Charging Accessories

### Safety Features:

- Design factors exceeding the requirements of all standard domestic & international codes.
- Integrated pressure relief design.
- Cannot be disassembled while pressurized.
- Each vessel individually tested and registered.

## Oil Cooling



An in-line oil cooler to keep your oil from overheating. comes in 2ft and 3ft sizes.



Oil Cooler 2 ft



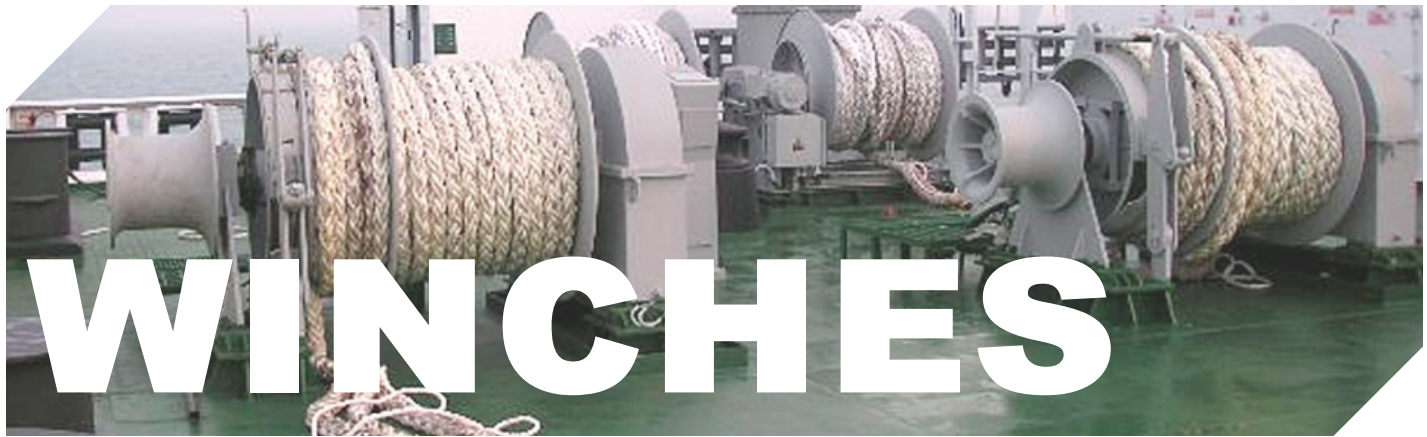
Oil Cooler 3 ft

## Oil Cooling

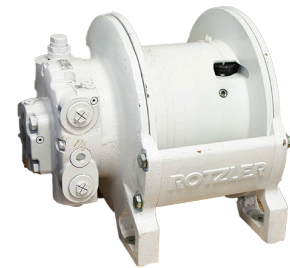


These coolers use a combination of high performance cooling elements and long life DC electrical powered fans to give extended trouble free operation in mobile hydraulic applications.





## Rotzler Titan TI



## Titan

	1.Layer	Top Layer	1. Layer	Top Layer		
	Max Hoisting Force (LBF)		Max Rope Speed Ft/min		Max Accumulated Rope Storage Ft	Rope Diameter Inch
TI 1	2,850	2,200	138	179	132	3/8
TI 2	5,900	4,400	139	184	141	7/16
TI 4	10,100	7,800	155	199	204	9/16
TI 5	12,300	9,300	152	198	256	5/8

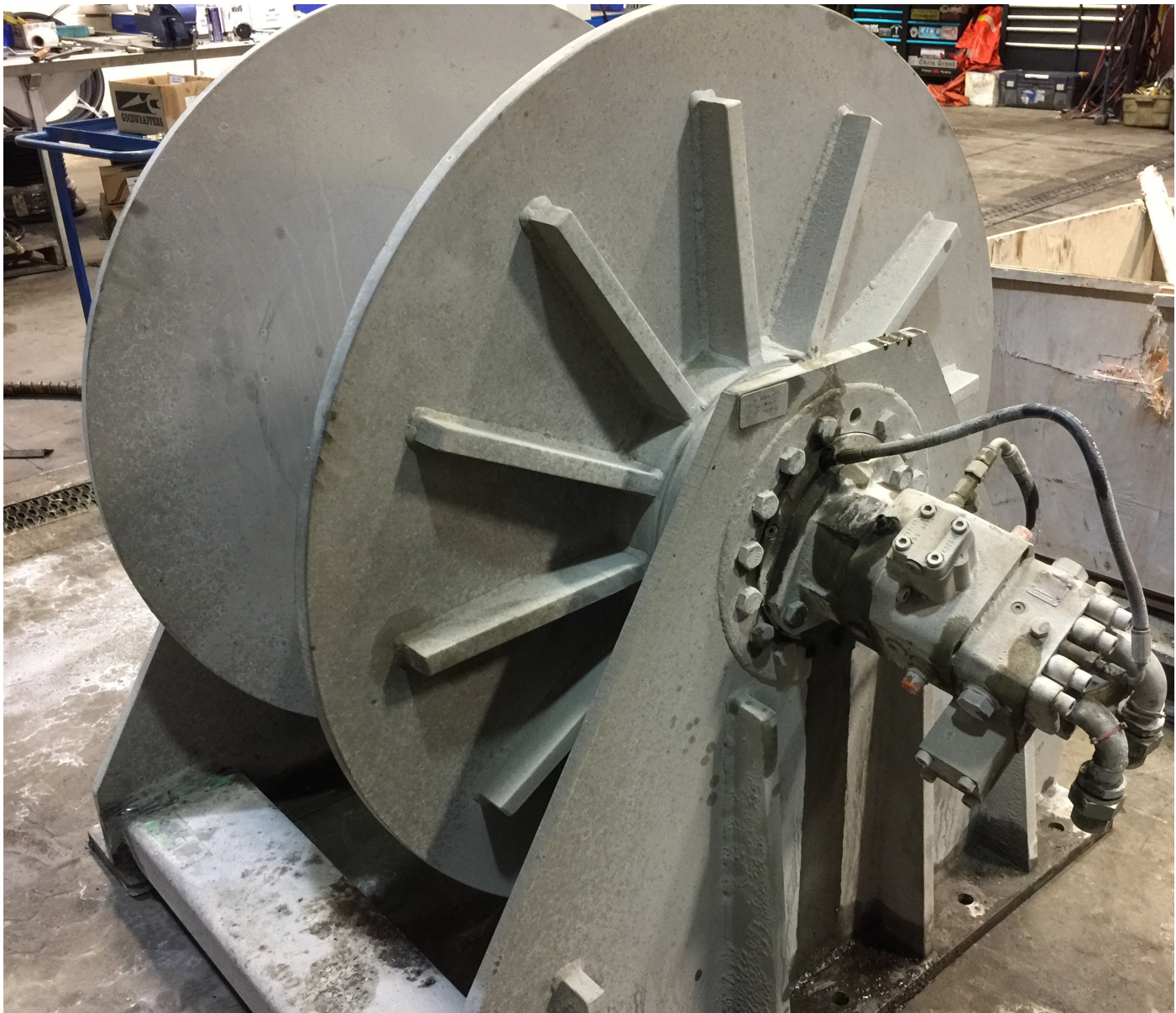
Rotzler does not compromise on quality. To ensure every winch is ready for installation, all are tested on our patented automated Rotzler test benches. Line pull, brake and overload tests are preformed. Test certificates are available for every winch, and kept on file.



## East Coast Custom Winches



## East Coast Trawl Winches





## East Coast Trawl Winches: Model ECSWA190

### Features:

Direct Planetary Gear Drive Power In / Power Out  
 Variable Displacement, Piston Drive Motor  
 Two Speed (250 PSI Piolet Required For Speed Selection)  
 Automatic Failsafe Brake  
 Standard Zinc & Epoxy Marine Finish  
 Optional Diamond Screw Levelwind Over or Underspooled  
 Optional Hot Dip Galvanize Finish

### Performance:

	Pull (Low Range)	Speed (Low Range)	Pull (High Range)	Speed (High Range)
Bare Drum	19,300 lbs	131 fpm	9,650 lbs	262 fpm
Mid Drum	10,600 lbs	239 fpm	5,300 lbs	478 fpm
Full Drum	7,100 lbs	356 fpm	3,550 lbs	712 fpm

### Dimensions/ Storage Capacity:

Model	Winch Width (B)	9/16" (Fathoms)	5/8" (Fathoms)	3/4" (Fathoms)	7/8" (Fathoms)
ECSWA190	42.5	900	750	500	390
ECSWA190	45.6	1075	900	575	450
ECSWA190	48.8	1250	1075	675	525
ECSWA190	51.9	1425	1200	775	620
ECSWA190	55.0	1600	1365	875	685

- All 48 winches are 48 inches long and 52 inches high
- Net drum same performance, made to spec. Made in aluminum or steel
- ECSWA190 - 80cc motor

**Hydraulic Requirements:** 35 gpm @ 3,500 psi

## East Coast Trawl Winches: Model ECSWB240

### Performance:

	Pull (Low Range)	Speed (Low Range)	Pull (High Range)	Speed (High Range)
Bare Drum	24,000 lbs	131 fpm	12,000 lbs	262 fpm
Mid Drum	12,300 lbs	239 fpm	6,150 lbs	478 fpm
Full Drum	9,500 lbs	356 fpm	4,750 lbs	712 fpm

### Dimensions/ Storage Capacity:

Model	Winch Width (B)	9/16" (Fathoms)	5/8" (Fathoms)	3/4" (Fathoms)	7/8" (Fathoms)
ECSWB240	42.5	900	750	500	390
ECSWB240	45.6	1075	900	575	450
ECSWB240	48.8	1250	1075	675	525
ECSWB240	51.9	1425	1200	775	620
ECSWB240	55.0	1600	1365	875	685

- All 48 winches are 48 inches long and 52 inches high
- Net drum same performance, made to spec. Made in aluminum or steel
- ECSWB240 - 107cc motor

**Hydraulic Requirements:** 50 gpm @ 3,500 psi

## East Coast Trawl Winches: Model ECSWC310

### Performance:

	Pull (Low Range)	Speed (Low Range)	Pull (High Range)	Speed (High Range)
Bare Drum	31,000 lbs	131 fpm	15,550 lbs	262 fpm
Mid Drum	18,000 lbs	239 fpm	9,000 lbs	478 fpm
Full Drum	13,100 lbs	356 fpm	6,500 lbs	712 fpm

### Dimensions/ Storage Capacity:

Model	Winch Width (B)	9/16" (Fathoms)	5/8" (Fathoms)	3/4" (Fathoms)	7/8" (Fathoms)
ECSWC310	42.5	900	750	500	390
ECSWC310	45.6	1075	900	575	450
ECSWC310	48.8	1250	1075	675	525
ECSWC310	51.9	1425	1200	775	620
ECSWC310	55.0	1600	1365	875	685

- ECSW 7248, 2200 Fathom of 3/4" cable
- ECSWC - 160cc motor

**Hydraulic Requirements:** 60 gpm @ 3,200 psi

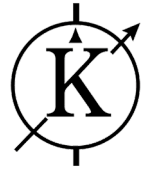
## Keypower Thruster

### Key Thruster Features:

- Auger-style propeller for equal thrust in both directions
- Available in bronze, aluminum or steel construction
- Hydrodynamic design for greater power and enhanced propeller efficiency
- Low maintenance adds value over time

### Optional Integrated Hydraulics:

- Load Sensing Piston Pump
- High Pressure Filter
- 4 Way / 3 Position Solenoid Valves
- Thruster Control Station in either Proportional or On/Off
- Hydraulic Reservoir
- Heat Exchanger



Model	Horsepower	Required GPM*	Required PSI*	Thrust lbs.f.
KP 8	10	7.5	2,500	250
KP 10	15	10.5	2,500	375
KP 12	25	16	2,600	625
KP 12 HD	30	20	2,500	750
KP 14	36	26	2,500	900
KP 16	50	34	2,600	1,250
KP 16 HD	62	45	2,500	1,550
KP 18	75	52	2,500	1,875
KP 18 HD	90	55	2,750	2,250
KP 22	110	75	2,500	2,750
KP 22 HD	135	83	2,750	3,375
KP 26	160	110	2,600	4,000
KP 26 HD	185	125	2,500	4,625
KP 36	250/ 350	As per application		6,250/ 8,750

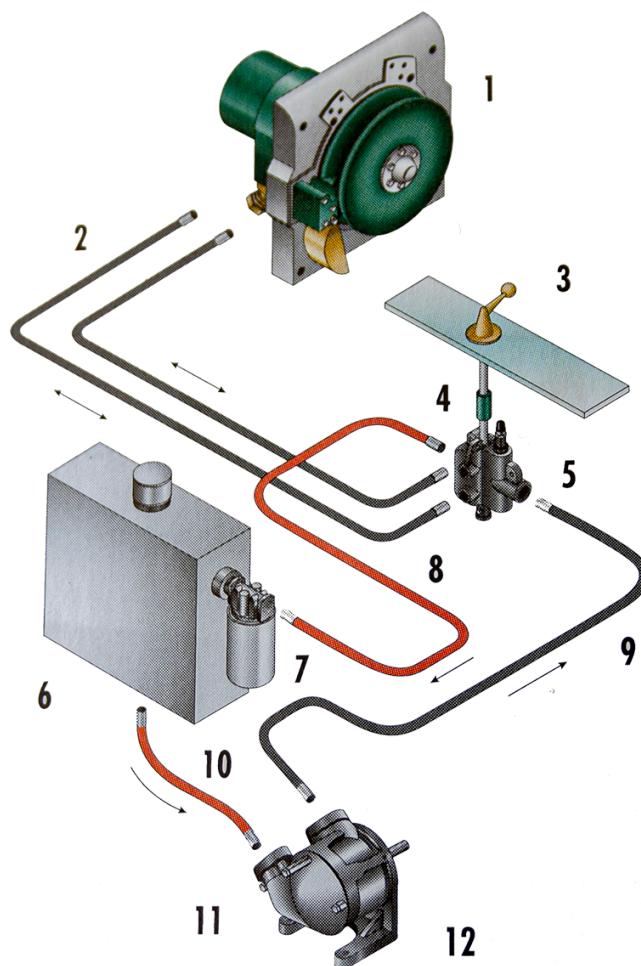
# HAULERS



East Coast Hydraulics is a proud supplier of Hydro Slave hydraulic and electric haulers. With a variety of sizes and mounts. We look forward to bringing you nothing but the best haulers with long-lasting life and durability.

## Standard Hauler Installation

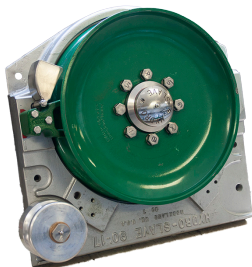
1. HEAD ASSEMBLY
2. WORK LINES
3. CONTROL HANDLE
4. CONTROL HANDLE CONNECTOR
5. CONTROL VALVE
6. HYDRAULIC FLUID TANK
7. IN-LINE FILTER
8. RETURN LINE
9. PUMP DISCHARGE LINE
10. PUMP SUCTION LINE
11. HYDRAULIC PUMP
12. PUMP MOUNT BRACKET



## 90° Style Haulers

### 90° Style Hauler Head Assembly

Hydro Slave  
MARINE EQUIPMENT LTD.



Size	Max Pull lb.	Max line speed ft/min	Motor	Mounting Plate	Hub	Discs	Splitter
<b>Stainless 90° Haulers</b>							
12"	585	630	101-1005	Stainless	Stainless	Stainless	Cast Iron
14"	1500	390	104-1434	Stainless	Stainless	Stainless	Cast Iron
<b>Corrosion Proof 90° Haulers</b>							
10"	1330	495	155100F30	Aluminium	Stainless	Stainless	Cast Iron
	1060	390	101-1003	Aluminium	Stainless	Stainless	Cast Iron
12"	585	630	101-1005	Aluminium	Stainless	Stainless	Cast Iron
	985	610	155250F30	Aluminium	Stainless	Stainless	Cast Iron
	650	510	101-1006	Aluminium	Stainless	Stainless	Cast Iron
14"	1350	645	104-1440	Aluminium	Stainless	Stainless	Cast Iron
	1510	500	350400A81	Aluminium	Stainless	Stainless	Cast Iron
	1370	485	104-1441	Aluminium	Stainless	Stainless	Cast Iron
	1510	400	350500A81	Aluminium	Stainless	Stainless	Cast Iron
	1500	390	104-1434	Aluminium	Stainless	Stainless	Cast Iron
<b>Economy 90° Haulers</b>							
10"	1330	495	155100F30	Aluminium	Stainless	Steel	Cast Iron
	1060	390	101-1003	Aluminium	Stainless	Steel	Cast Iron
12"	585	630	101-1005	Aluminium	Stainless	Steel	Cast Iron
14"	1350	645	104-1440	Aluminium	Stainless	Steel	Cast Iron
	650	510	101-1006	Aluminium	Stainless	Steel	Cast Iron
	1510	500	350400A81	Aluminium	Stainless	Steel	Cast Iron
	1370	485	101-1441	Aluminium	Stainless	Steel	Cast Iron
	1510	400	350500A81	Aluminium	Stainless	Steel	Cast Iron
	1500	390	104-1434	Aluminium	Stainless	Steel	Cast Iron
15"	2425	335	60047A31	Aluminium	Stainless	Cast Iron	Cast Iron
17"	3030	615	8001K0C89	Aluminium	Stainless	Steel	Cast Iron
	2500	480	112-1069	Aluminium	Stainless	Steel	Cast Iron
	2150	335	112-1068	Aluminium	Stainless	Steel	Cast Iron

## Hanging Style Haulers

### Hanging Style Hauler Assembly

Hydro Slave  
MARINE EQPMNT LTD.



Size	Max Pull lb.	Max line speed ft/min	Motor	Mounting Plate	Hub	Discs	Splitter
------	-----------------	--------------------------	-------	-------------------	-----	-------	----------

#### Corrosion Proof Hanging

10"	1330	495	155100F30	Aluminium	Stainless	Stainless	Cast Iron
	1060	390	101-1003	Aluminium	Stainless	Stainless	Cast Iron
12"	585	630	101-1005	Aluminium	Stainless	Stainless	Cast Iron
	650	510	101-1006	Aluminium	Stainless	Stainless	Cast Iron
14"	1350	645	101-1440	Aluminium	Stainless	Stainless	Cast Iron
	1525	615	350320A81	Aluminium	Stainless	Stainless	Cast Iron
	1510	500	350400A81	Aluminium	Stainless	Stainless	Cast Iron
	1370	485	104-1441	Aluminium	Stainless	Stainless	Cast Iron
	1510	400	104-1434	Aluminium	Stainless	Stainless	Cast Iron
	1500	390	104-1440	Aluminium	Stainless	Stainless	Cast Iron

#### Economy Hanging

10"	1060	390	101-1003	Aluminium	Stainless	Steel	Cast Iron
12"	585	630	101-1005	Aluminium	Stainless	Steel	Cast Iron
	985	610	155250F30	Aluminium	Stainless	Steel	Cast Iron
	650	510	101-1006	Aluminium	Stainless	Steel	Cast Iron
	1540	320	255400F30	Aluminium	Stainless	Steel	Cast Iron
14"	1510	500	350400A81	Aluminium	Stainless	Steel	Cast Iron
	1510	400	350500A81	Aluminium	Stainless	Steel	Cast Iron
	1500	390	104-1434	Aluminium	Stainless	Steel	Cast Iron
15"	2425	335	600470A31	Aluminium	Stainless	Cast Iron	Cast Iron
17"	2310	1205	800525C89	Aluminium	Stainless	Steel	Cast Iron
	3030	615	8001K0C89	Aluminium	Stainless	Steel	Cast Iron
	2500	480	112-1069	Aluminium	Stainless	Steel	Cast Iron
	2150	335	112-1068	Aluminium	Stainless	Steel	Cast Iron

## EAST COAST HYDRAULICS

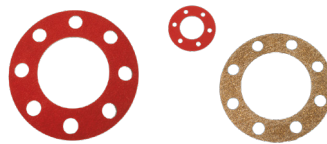
HYDRAULICS | HOSE & FITTINGS | CYLINDERS

### Disc Liners



- Simply install a pair of liners between your hauler discs and replace the liners as they wear, not your discs.
- 1/16" thick steel, galvanized for corrosion resistance.

### Plate Shim



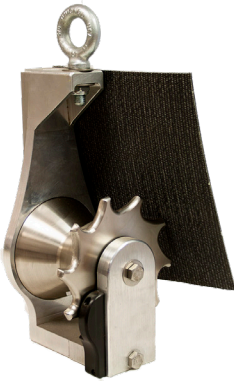
- Replacement Shims for the lining of pot haulers.

### Replacement Eye Bolts Kit



- 10"
- 12"
- 14" and 15"
- 17"
- Kit includes eyebolt, nut and roll pin

### Lobster Blocks



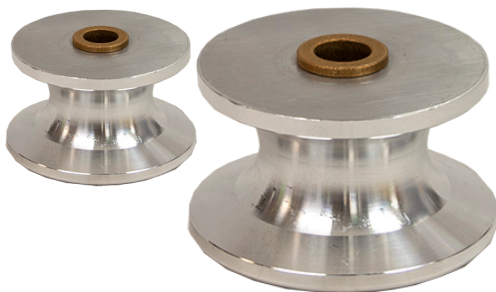
- Cast aluminium frames and sheaves, stainless steel shafts, and bolts, galvanized swivel eye, grease fittings on shaft and swivel eye.
- Sheaves have stainless steel sleeves with bronze "oilite" bushings.
- Drilled for spray shields; **Spray shields not included.**

### Hauler Electric Switch



Bi-directional electric control

### Fairlead Rollers - Aluminium



- Solid machined aluminium rollers, bronze bushings and stainless steel shafts.

### Pot Hauler Motor

Nidec Motor Corporation is a leading manufacturer of commercial, industrial, and appliance motors and controls. We have a passion for designing solutions for everything that spins and moves – and that enthusiasm shows in each product we create. You can depend on our motors and controls to power your processes with peak performance and long-lasting reliability. We offer several first-class brands that have been creating dynamic motors and drives solutions for decades – some for over a century. Our product lines feature a full range of high efficiency motors including the one used in the electric hauler.



# CRANES

East Coast Hydraulics represents the products of some of the most recognizable names in the field of hydraulics. Both in Service and in Sales, we offer the range of products from these Original Equipment Manufacturer's.

## Jacobs Brother Cranes

East Coast Hydraulics and Jacobs Brothers Cranes partner to offer cranes custom designed and built to the exact specifications of the customer. Extraordinary to other crane suppliers, with Jacobs Brothers we can work together from the very beginning of the design stage and offer a custom crane as opposed to trying to find the closest match to your needs by taking an off the shelf design and crane. We can offer these cranes built to meet Class Approvals from any of the International Association of Classification Societies (IACS)



### HIAB Marine Cranes



### EVERYDAY SUPPORTING YOUR SEA OPERATIONS:

For those customers using few vessel units all the way up to those handling bigger fleets. The possibility to fit several cranes on a single vessel allows to manage flexible operations and increase productivity.

There is always a crane model for the several sea and marine uses and boat applications:

- Recovery, material loading and unloading and for fishing boat purposes.
- Coast guard vessels, tugs, supply ships, oil drilling platforms, ice breakers, and dredgers, barges, research boats, cruise ships, navy ships, fishing boats and dockyards



## Range:

The HIAB sea crane is outstanding in comparison with outdated stiff booms and derricks. The knuckle boom principle creates exceptional freedom of movement, while maintaining a maximum lifting capacity, precise load handling, extra capacity at reduced reach and an optional total overload protection. To top it off, the crane folds efficiently into a compact storage space.

	H051-3	H061-3	H081-3	H111-3	H121-3	H201-5	H251-5	H301-5	H331L-4	H401L-4	H402-6	H501-6
Crane Capacity (kNm)	45	50,8	72,6	100,9	127	160	227	270	311,5	362	347	436
Max, Outreach (m)	9,09	9,6	9,6	9,9	12,0	14,1	13,6	13,7	17,0	16,1	17,4	17,0
Lifting Capacity (m/kg)	4.1/1120 5.7/760 7.3/570 9.0/540	3.8/1330 5.4/900 7.3/650 9.2/500	4.3/1720 6.0/1180 7.8/870 9.6/700	4.4/2340 6.1/1700 7.9/1200 9.7/960	5.4/2400 7.6/1700 9.8/1200 12.0/1000	5.1/3200 6.8/2220 8.6/1640 10.4/1280 12.3/1040 14.1/900	5.2/4550 6.8/3250 8.5/2500 10.2/2040 11.9/1720 13.5/1500	5.3/5200 6.9/3800 8.5/3000 10.2/2460 11.9/2080 13.6/1800	8.5/3750 10.6/2820 12.7/2260 14.9/1860 17.0/1620	8.6/4300 10.6/2820 12.7/2260 14.9/1860 17.0/1620	5.2/6800 7.2/4600 9.2/3400 11.3/2600 13.3/2120 15.4/1780 17.4/1560	5.3/8400 7.0/6060 8.9/4400 10.9/3400 13.0/2700 15.0/2300 17.0/2000
Weight(Kg)	710	1040	1280	1500	2350	2930	3400	3600	4600	5200	4810	5400
Lifting Speed(Sec)	13	12	15	18	26	33	51	51	40	50	45	45
Rated Working Pressure(Bar)	260	250	250	260	250	260	240	250	250	250	260	280
Rated Oil Flow(* / Min)	25	35	35	35	40	40	40	40	60	60	60	60
Slewing Angle (*)	410	400	400	400	400	400	400		360 Continuous Slewing			
Max Heel/ Trim Angle (*)	5	7	7	7	7	7	7	7	7	7	7	7
Slewing Torque (kNm)	6,2	11,1	14,2	23,7	31,6	45,5	45,5	48,1	56,0	62,1	62,6	66,5
Slewing Speed(* / Sec)	7,2	7,2	7,2	7,2	7,2	7,2	7,2	7,2	7,2	7,2	7,2	7,2
Net Required Power (Kw)	10,6	14,3	14,3	14,9	16	16,3	15,7	16,3	24,5	24,5	25,5	27,5

The cranes are designed, made and certified to resist under typical hard working conditions in the marine environment, like wear and tear, saline fog or for extreme temperatures. Furthermore, they are

ideal to be installed onboard ships and vessels to handle loading different materials. The range of marine cranes can fulfill the EU standards EN13001 and EN 12999 upon request.

- SA 2.5 shot blast before primer forms the base for highest quality painting finish
- Stainless steel pipes, hose and pipe fittings used to prevent corrosion in crucial parts.
- Stainless steel bolts used except in high-tensile parts.
- Hot dip galvanizing in extension booms and outer boom beams made to withstand harsh marine environments.
- Double chrome treatment and special seals on hydraulic cylinders ensure trouble-free operation in the most demanding conditions.
- Marine painting (primer, middle and final paint) of 210 micron.
- Oil bath type slewing system ensures easy maintenance and delivers long-life slewing.
- Strength calculation is carried out in accordance with EN 13001.



### Aquaculture and Fish Farming

#### Aquaculture and fish farming

HIAB has a long history in serving customers whose fishing and abalone farming businesses require cranes with a long reach and that work every day in a reliable and durable manner. The cranes are designed, made and certified to resist under typical hard working conditions of the marine environment, like wear and tear, saline fog or for extreme temperatures.

Main advantages for the aquaculture activity:

- Ideal crane sizes for vessels that require up to two to three crane units demand.
- Long reach and rapid movements of the crane, both during rotation, extension and retraction of the boom.
- Powerful motor gears and high quality marine proof components.
- Spare parts easily available in any country thanks to Hiab's worldwide sales and service network.



# HIAB

## BIG Max Cranes

# BIGMAX®

BY DRIVE PRODUCTS



BIGMAX® is a manufactured brand of Drive Products. The Drive Products family of manufactured brands supports owners & operators as a leader in the Canadian truck mounted equipment industry and supports vehicles from Class 2 to Class 8. Strong, light weight hexagonal boom construction, a TC Series truck crane can safely lift up to 5,300 pounds. TC Series cranes come in 7 models with hydraulic extensions of up to 19.5 feet. These cranes can be powered by either a power take-off pump or a battery operated power pack. Designed for low maintenance, these cranes use US standard hoses and hose ends making them easy to service and maintain.

	A	B	C
TC 100	24.6	48.8	11.8
TC 130	31.3	48.9	12.2
TC 160	31.3	48.9	12.2
TC 200	32.0	59.1	11.8
TC 260	33.9	63.0	11.8
TC 300	33.9	63.0	11.8
TC 350	41.0	67.0	13.0

## BIGMAX TC Series:

## Choice:

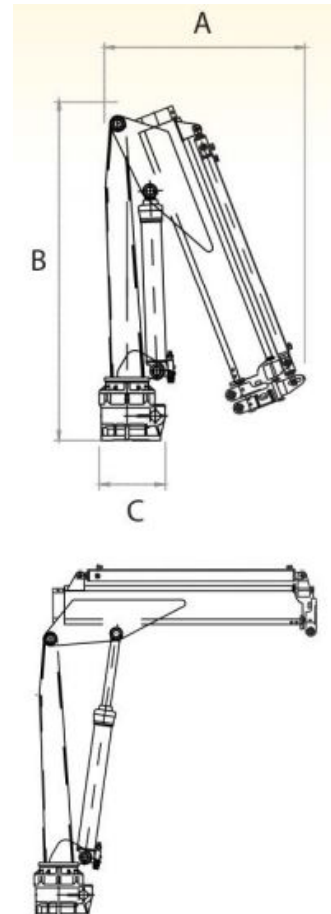
- 20 Models from 6,700 to 25,000 ft. lbs.
- Hydraulic extensions to 19.5 ft
- Compact design requires less mounting/ stowage space
- powered by PTO pump or truck battery
- Range of outrigger stabilizers

## Strength:

- High tensile steel construction
- Designed for low weight and maximum lift
- Cast steel base with oil bath slewing gears
- Two-year limited warranty

## Safety:

- Active and passive overload protection
- Counterbalance safety valve flange-mounted to main cylinder
- In-cab power shutoff switch on DC models
- Complies with ANSI B 30.5, DIN 15018 and EN12999 Standards



## TC Series - Compact Telescopic Mono-Boom Cranes

### Crane Options:

- Power Pack:** 12 and 24V DC power packs are available when a PTO pump is not available.
- Crane Mounting Base:** To mount the crane directly to the truck frame.
- Winch:** a winch can be installed on most TC models to increase vertical lift capability. Winches are standard on TC Blizzard cranes.
- Radio/ Wireless Controls:** Hand held or wired controls are available for enhanced safety and convenience.
- Accessories:** rotators, grabs and augers are available for most TC Models
- Outrigger Stabilizers:** are available for all TC Series cranes

Model	Maximum Lift	Lift Moment (ft. lbs)	Maximum Reach	Base Crane Weight (lbs)
TC 100	1,890 lbs	6,710	12'	277-332
TC 130	2,585 lbs	8,800	12'	341-396
TC 160	2,895 lbs	10,250	12'	341-396
TC 200	3,505 lbs	14,430	16'10"	417-530
TC 260	4,103 lbs	17,175	16'10"	497-601
TC 300	4,521 lbs	19,850	17'1"	521-653
TC 350	5,296 lbs	24,900	23	650-860

### Specifications

#### Features:

- Compact design, requires minimum mounting and stowage space
- Available in 7 models with hydraulic extensions to 19.5 feet
- Strong, light weight hexagonal boom construction
- PTO pump or truck battery operated
- Simple installation as all models have the same mounting bolt pattern
- Easily serviced with readily available US std hoses and hose ends
- Rugged, cast steel base with enclosed oil bath slewing gears

#### Safety Devices:

- Counterbalance safety valve mounted directly to main lift cylinder
- In-cab power shutoff switch on DC models
- Active and passive overload protection
- Hose failure valves

## Heila Truck and Marine Cranes



Heila Cranes produces a wide range of stiff boom crane, telescopic boom crane, knuckle boom crane, foldable telescopic boom crane, Knuckle telescopic boom crane and heavy duty cranes East Coast Hydraulics is a service centre for these cranes.

## BIK Boom-Truck Cranes



BIK ensures that your company will not only receive the proper equipment to do the job in the most cost effective way, but it will be engineered and assembled with the highest level of quality, maximizing payload and stability. Once you take delivery of your new inventory, you will enjoy the full support of the North American Network of BIK approved service facilities ready to take care of any service needs and East Coast Hydraulics is one of those centres.

## EAST COAST HYDRAULICS

HYDRAULICS | HOSE & FITTINGS | CYLINDERS



Since 1969, the roar of an orange Arctic snowplow has often meant the difference between shutting things down and keeping things moving. Confronted with some of the harshest conditions on the planet, Arctic has been there to put winter where it belongs – on the side of the road.

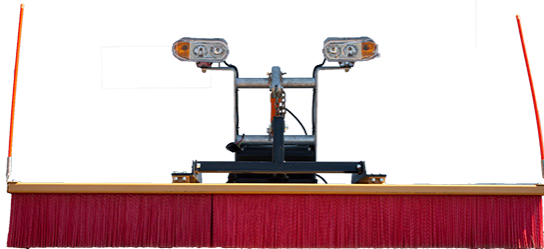


Arctic supplies the best line-up of snow clearing and equipment. From Plows, Lights, Control remotes, Salt Distribution and Repair Kits. East Coast Hydraulics delivers nothing but the best for the task at hand.



## Power Angeled Broomer

If you have a parking lot covered in gravel, driveway full of leaves, or a side road covered in dirt. The Power Angeled Broomer makes cleaning up a snap.



## Heavy Duty Wing Blade VAW

Using Arctic's hydraulically activated multi-angle wing, we have transformed our heavy duty trip edge plow to become 123" in the open position; or a 98.5" box plow at the push of a button.



## Heavy Duty Flattop V Blade

Each horizontally reinforced, steel backed poly section, comes with a double-acting 1 1/2" X 9" ram. The Arctic HDVTE-P full-grip joystick puts unprecedented control in the palm of your hand. Winter can visit, but it does so on your terms. Built for full-size vehicles and larger.



## Heavy Duty Straight Plow

Built for full-size vehicles, the Arctic HD-P is the workhorse of the fleet. This popular plow, like all of our poly plows, uses a combination of slick polyethylene skin and advanced blade design mechanics to initiate a rolling motion that throws even the stickiest, wettest snow faster and further.



## Heavy Duty Flared V Blade

Built for full-size vehicles and larger, the Arctic HDFVTE-P offers the additional security of trip-edge technology. Featuring a steel cutting edge that flips back and under – or “trips” – when it encounters a fixed object with sufficient force, the Arctic HDFVTE-P provides extra peace-of-mind in extra-rugged terrain.



## SD2 Poly Blade

The newly redesigned Arctic SD2-90P Poly plow gives the half ton pick up truck owner everything they want: good looks, improved ground clearance, taller moldboard, reliable components. Curved deflector and blade guides are standard, reflective logos and (optional) heated LED lights will let you see and be seen. Quality components, legendary strength and galvanized steel are why Arctic Snowplows boast the lowest cost of ownership over time.



## EAST COAST HYDRAULICS

HYDRAULICS | HOSE & FITTINGS | CYLINDERS

### Arctic Joystick



Joysticks are used to input commands to your plow, designed to be light, comfortable and easy to use.

### Plow Control Module

Isolation Modules are the brains of the plow electrical system. When you push a button on your hand held controller, that information is passed onto the Isolation module in order to help notify the plow of the movement as well as pass this information to the hydraulic system.



### Straight Blade Handheld Controller



A light and easy to use controller for the use of Straight Bladed snowplows.

### VAW Wing Blade Handheld Controller



A light and easy to use controller for the use of Wing Bladed snowplows.

### V Blade Handheld Controller



A light and easy to use controller for the use of V Bladed snowplows.



## High Intensity Halogen Lights

- Powerful halogens won't ice up in frigid conditions.
- Vibration-resistant dual-post design is built for years of use.



High Intensity Halogen Plow Lights are designed to be reliable. Snow storms happen at all hours, and the HXs are bright enough to punch through whatever winter throws at you. The lights won't ice up in frigid conditions, and a sturdy dual-post design provides maximum vibration resistance. Special optics are designed to provide maximum light coverage whether you're using the high or low beams.

## LED Snow Plow Lights

- 10-30VDC
- Aluminum Hosing (Black)
- Glass Lens (tempered)



Your choice of standard units or units with a built-in sensor that will automatically activate the heated lens function when the temperature of the light drops to 30°C. This function will automatically turn off when the temperature of the light reaches 50°C.

## High Intensity LED Lights



Arctic Heated LED Plow Lights are upon the top contenders for essential plowing purposes. Outshining the competition, these lights are designed to prevent snow and ice buildup, while giving the best possible vision in all winter conditions.

- Prewired - Easy installation
- 12Vdc - Use for light duty trucks or heavy equipment
- LED Technology - Crisp and clear light output.



## Safety Lights

15 Inch Octagonal LED Mini Light Bar has 56 LEDs and includes a 15 ft power cord with accessory power plug and on/off switch. This light mounts on your vehicle with heavy duty magnetic feet or with the included permanent mounting studs.

The light bar is available in three colors and features 10 adjustable flash patterns. The amber light bar is SAE J845 Class 1 rated.

- Amber light comes with a SAE J845 Class 1 rating.
- Features ten adjustable flash patterns.
- Includes accessory power plug with on/off and momentary flash pattern switch.



## EAST COAST HYDRAULICS

HYDRAULICS | HOSE & FITTINGS | CYLINDERS

### Large Salt Bin 8 CUB FT



**ARCTIC**  
SNOWPLOWS • CHASSE-NEIGE

Keep a supply of dry salt available with this handy polyethylene large sized storage salt box (rectangular edges). Dimensions 22"W x 31"L x 23.5 H.

### Salt Spreader



Our superior sanding and salting solutions are now even better. Arctic's newest spreaders are engineered with two things in mind: ease and durability. Our spreaders and sanders are easy to operate and maintain, and offer an all-new level of toughness, courtesy of our innovative galvanized coating.

Your choice of gas or hydraulic drive, or 12 volt electric motor drive.

- Available in four sizes: 4', 6', 8' and 10'

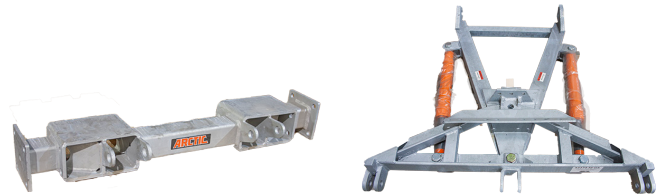
### Salt Spreader



**ARCTIC**  
SNOWPLOWS • CHASSE-NEIGE

Our superior salting solutions are now even better. Arctic's newest spreader is engineered with two things in mind: ease and durability. This spreader is very easy to operate and maintain, and offers a new level of toughness, courtesy of our innovative galvanized coating and tough poly hopper.

### Galvanized Mounting Brackets



Mountin brackets are used for mounting plows and other equipment onto your vehicle. East Coast Hydraulics supplies mounting brackets in different sizes to suit all plowing needs.

Types:

- GMC Truck
- Ford Truck
- Dodge Truck
- Chevy Truck
- ATV Mount



## Mobil Super 1000

Mobil Super™ 1000 oils are formulated from quality base stocks combined with modern performance additives to give your engine the protection it requires and the performance you expect from your vehicle under a wide variety of operating conditions.

Mobil Super 1000 oils are available in three multi-viscosity grades: SAE 5W-20, 5W-30 and 10W-30.



## Mobil 1™ 5W-20

Mobil 1 5W-20 advanced full synthetic motor oil is designed to deliver outstanding engine protection, keep your engine running like new and protect critical engine parts for up to 10,000 miles between oil changes.

Nothing outperforms Mobil 1 in overall performance, a motor oil which comes as standard equipment in many different vehicle models, including select high-performance vehicles



## Mobil Super 3000

Mobil Super™ 3000 is a synthetic motor oil, which provides excellent high temperature protection even under severe operating conditions. Mobil Super 3000 is designed to help provide long engine life and outstanding protection in vehicles of all ages. Mobil Super 3000 provides outstanding protection against sludge, engine rust and corrosion under severe and low-temperature operating conditions and provides optimum viscosity and fluidity across a broad range of temperatures.



## Mobil UNIVIS HVI 13

Univis HVI is a line of premium performance anti-wear hydraulic oils characterised by their unusually high viscosity indexes. They are engineered to maintain close viscosity control over wide temperature range applications.



## Mobil ATF D/M

Provides oxidation and friction stability and anti-wear properties desired for most automatic transmissions. A synthetic blend ATF.



## Mobil 1™ European Car Formula

Mobil 1™ FS 0W-40 European Car Formula is an advanced full synthetic motor oil engineered for the latest gasoline and diesel (without Diesel Particulate Filters or DPFs) engine technology delivering excellent all-round performance. It provides exceptional cleaning power, wear protection and overall performance. Mobil 1 FS 0W-40 keeps your engine running like new and protects for up to 16,000 kilometers between oil changes.



## East Coast Hydraulics Anti-wear Hydraulic Oil



Our in shop flushing unit allows us to condition your oil to a cleanliness level that you choose, we also have mobile flushing units to allow for mobile use.



## Steering Quadrants

### Single Steering Quadrant



- SF bushing compatible from 1" to 3/4"
- stainless steel quadrant head with replaceable oilite bushings
- 100 degrees of rudder movement
- 50 degrees in each direction
- easy installation

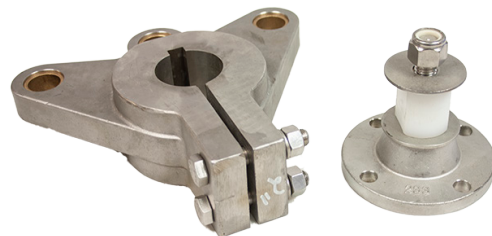
### Double Steering Quadrant



- Bored to fit 1 1/2", 1 3/4", 2 1/4", 2 1/2"
- Absolutely no side load on the rudder shaft
- No need for extra bearings
- 90 degrees of rudder movement
- 45 degrees in each direction
- Easy installation

## Seperate Parts

Though we carry full steering units, East Coast Hydraulics also carries other parts such as steering frames, replacement bolts, extra cylinders and more.



# Hydro Slave

## MARINE EQPMNT LTD.

## HyDrive Admiral Series Hydraulic Steering



The Admiral Series is recognised world-wide as probably the most powerful and corrosion-resistant range of outboard steering systems available for outboards.

For high horsepower installations on leisure or commercial vessels, the Admiral Series is the optimum choice. There are no direct equivalents made by other manufacturers, who almost exclusively manufacture their cylinders from aluminium. The HyDrive Admiral range cylinders are made of the finest marine brass, bronze and stainless steel – giving you the best possible protection against the toughest marine environments and extreme performance.

## Capilano 1250V Steering Helm



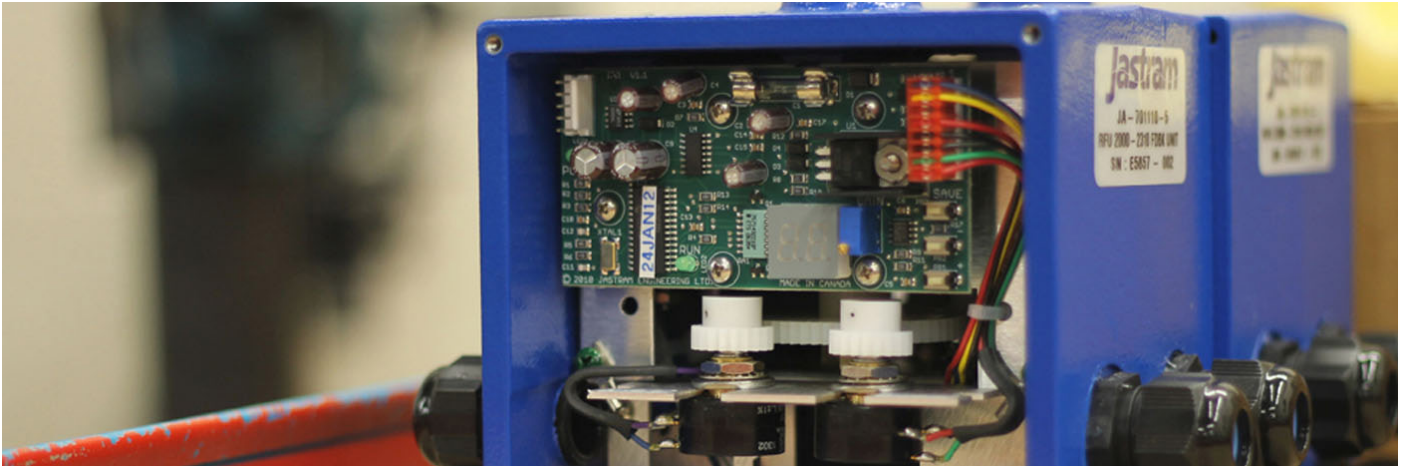
Capilano Helms and Cylinders are engineered and manufactured for heavy duty marine usage, and are suitable for commercial, work boat and pleasure boat applications. Capilano Hydraulic Steering has been designed to meet ABS, Lloyds and DNV specifications.

## Steering Handle for Boat



Steering handle for boat

## Jastram Engineering



Jastram Engineering is built on the understanding of how critical steering is to the operation of any vessel. The comfort and safety of the vessel and crew is in part dependent on how well the steering system functions. We believe that steering is one of the most important elements of any vessel. This motivating force is why Jastram is compelled to design and manufacture to the highest quality. We provide dependable engineered marine steering solutions worldwide and in Newfoundland East Coast Hydraulics is the OEM rep for Sales and Service.

### Jastram Helm Pump



The H pumps are designed to operate in "non-pressurized" hydraulic systems requiring only two lines from the helm pump to the cylinder. The Model H helm pumps include the following standard features:

- An external lockvalve to isolate with helm and prevent rudder feedback
- A pressure rating for the lockvalve of 1,875 PSI
- A powder coated, high strength cast aluminum housing which provides corrosion and abrasion resistance
- A flexible mounting pattern allowing any angle between the vertical and horizontal axis
- An internal capacity to act as a small vented oil reservoir

### Jastram Electric Wheel



The EW provides full follow-up electric wheel control. When the traditional steering wheel is turned the EW produces an analog rudder command signal. The rudder will then follow-up to the position commanded by the movement of the wheel.

- Compatible with all Jastram Full Follow-up steering systems.
- Standard shaft size for customer supplied wheel
- The EW200 provides 4 turns lock to lock
- Multiple output signals are available to control a second amplifier or a rudder order indicator
- Steering wheel "feel" is adjustable
- The Internal mechanism is protected by a slip clutch to prevent damage to the unit
- Rudder Order Indicators driver boards are optional
- ROI's are recommended so the helmsman knows where the rudder will follow-up to
- Waterproof and corrosion resistant housing, with an IP 66 rating

## Jastram Digital Wheel



Digital Wheels are unique input devices which provide full follow-up digital electric control. The two main features of the Digital Wheel over the standard electric wheel are:

1. A programmable number of wheel turns from  $\frac{1}{4}$  to 10 turns lock to lock.
2. When taking over control of the steering system the Digital wheel takes over at the present position of the rudder.

Under power steering, the steering wheel is turned producing a rudder command signal. The rudder then follows up to the position requested by the wheel.

## Jastram Lever Controllers



The Jastram Lever Controller provides full follow-up (way dependent) electric control.

When the steering lever is moved to the desired rudder angle, the rudder will follow-up to the position requested by the lever.

- Smoother and more accurate steering than jog steering
- Compatible with all Jastram Full Follow-up steering systems and most third party autopilots
- The rudder position is displayed by an indicator strip below the lever arm of the LC.
- Four versions are available

## Jastram Digital Helm



This patented hybrid hydraulic / electric unit provides full follow-up digital electric control as well as emergency manual hydraulic control. Under power steering, the steering wheel is turned producing a rudder command signal the rudder then follows up to the position requested by the wheel. In the event of a power failure the digital helm seamlessly transfers to manual hydraulic steering. Under emergency manual hydraulic steering the number of turns depends on the size of the actuators.

Under power steering mode:

- Adjustable number of wheel turns, programmable from  $\frac{1}{4}$  turn to 10 turns lock to lock
- Effort to turn the wheel does not change regardless of operating conditions
- When taking over control of the steering system the Digital wheel takes over at the present position of the rudder. Other systems usually move the rudder back to center before acquiring control of the steering.
- Capable of Manual steering

## Jastram Jog Lever



The Jastram Jog Lever provides non follow-up (time dependent) electric control. Jastram Jog Levers operate either completely on (as long as the switch is activated) or completely off (when it is released).

- Compatible with all Jastram's electro-hydraulic steering systems and most third party autopilots
- Four versions available:
  - JO100-1 contains one set of microswitches
  - JO100-2 contains two sets of microswitches
  - JO300-1 yacht styling with one set of microswitches
  - JO300-2 yacht styling with two sets of microswitches
- The spring loaded jog switch returns to center when released (The rudder remains where positioned when the lever is released)
- Waterproof and corrosion resistant housings, with an IP 66 rating
- Supplied with 5ft (1.5m) of cable

### Jastram RFU 300



The RFU 300 is built to resist water and damage caused by vibrations from rough seas and mechanical systems. The RFU 300 features a high quality, long life potentiometer with heavy duty gears. Designed to be used only with the RAI Panoramic 3300 and RAI 301/RAI 300

- Up to three indicators can operate at the same time
- Unit operates on any voltage between 10-32 VDC
- Comes with 50' cable

**Jastram**  
ENGINEERING LTD.

### Jastram RFU 400



**Jastram**  
ENGINEERING LTD.

The RFU 400 is built to resist water and damage caused by vibrations from rough seas and mechanical systems. The RFU 400 features a high quality potentiometer with heavy duty gears, and a built in electronic driver board. The addition of the driver board in the unit eliminates the need for a 301 Indicator Designed to be used with the RAI 300.

- Up to five indicators can operate at the same time
- Unit operates on any voltage between 10-32 VDC
- Waterproof design with unique double sealed shaft and waterproof quick connect cable plugs

### Jastram RFU 2000

**Jastram**  
ENGINEERING LTD.



The RFU 2000 is built with cast aluminum and stainless steel and designed for heavy duty use in both commercial and pleasure crafts. Two types of devices are available for the RFU 2000 to generate the feedback signal: the standard is the potentiometer type, and second would be the optional contact free Hall Effect. All electronic circuitry necessary to develop rudder feedback signal and rudder angle signal is contained within the RFU 2000. The RFU 2000 outputs both a rudder angle indicator signal and rudder feedback signal, as well as an optional second independent second rudder angle indicator signal.

- Built in set of adjustable limit switches (an optional second set of limit switches is available).
- Unit operates on any voltage between 10-32 VDC
- Waterproof design with unique double sealed shaft and waterproof quick connect cable plugs

## Rubber Indicators X80



The X80 Series Rudder Angle Indicators are produced to fill the requests of Vessel operators and to meet Classification Societies requirements. The X80 Indicators come in 3 sizes to fit all bridge applications. Up to five indicators can be used with a mixture of forward and reverse scale meters.

- Wheelmark and MED Approved
- Designed to be flush-mounted for panel or console
- X80 series are rated for IP52 Protection

## Rubber Indicators 3300



The Largest of the Indicators is the 3300 overhead three faced panoramic indicator. These are stand alone systems comprised of three main components:

1. A three faced panoramic Rudder Angle Indicator (RAI 3300)
2. RAI 3300 power Supply
3. Rudder Feedback Unit

- Built in dimmer allows for adjustment of the backlight
- Deckhead mounted at any convenient location in the wheelhouse
- Cable requirements 16 AWG, 3 wire, shielded

## Digital Control System



The Digital Control System consists of four basic components:

- A Digital Steering Controller (DSC)
- At least one Mode Control Processor (MCP)
- At least one Steering Input Device
- A Rudder Feedback Unit (RFU)

The core of the Jastram Digital Control System is the Digital Steering Controller (DSC). The DSC processes signals from the Mode Control Processors (MCP) and in turn controls the response of the hydraulic power units and, ultimately, the rudder. The MCP is a station processor which connects the signals from the station Input Devices and Control Panels to the DSC

## Digital Control Amplifier



The new Jastram Digital Control Amplifier (DCA) is specifically designed for small to mid-size commercial vessels and pleasure crafts. As its larger cousin the DSC, it relies on state-of-the-art digital technology for fast and accurate steering controls, in a small and simple design.

Up to eight input devices can be connected to each DCA. These input devices can be Non-Follow-Up (jog switch), Full-Follow-Up (lever controller or electric wheel), Digital (Jastram digital helm pump) and an additional interface to autopilot is provided.

The DCA is the controller between the rudder command and the steering hydraulics. It will convert the command from any input device to a smooth and accurate rudder motion.

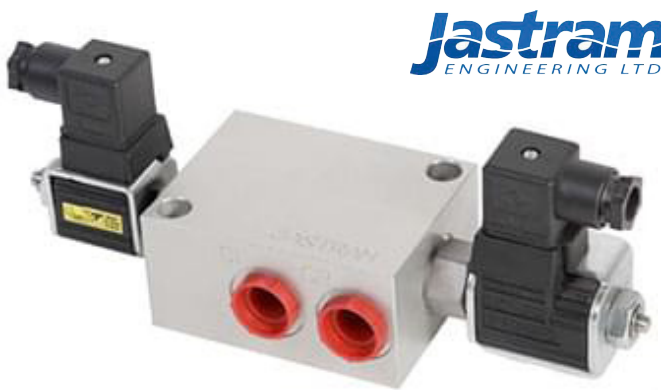
### Control Panel

This unit provides direct button selection of the available steering control modes. It is configured for each system installation. Mode selection is located at every steering station as required by Classification Societies.

- Selected mode of steering is illuminated
- Control Panel face is backlit and includes a built-in dimmer control.
- Fault light and audible alarm are built in
- Black Lexan face panels are:
  - 3 in. (76mm) wide by 6 in. (152mm) high, or
  - 3 in. (76mm) wide by 3 3/4 in. (95mm) high
- Panels are water resistant from front.
- Selection panels can also be supplied by others for integration into an integrated bridge

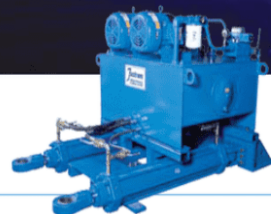


### Jastram Digital Helm Manifold



The Digital Helm Manifold (DHM) is a small, compact manifold which provides seamless transfer from fly-by-wire steering to emergency manual hydraulic steering in the event of a power failure.

- To be used in conjunction with the Jastram Digital Helm
- Within certain parameters, a single DHM can service Multiple Digital Helms



**Jastram**  
ENGINEERING LTD.

Engineered For Life At Sea

## Wagner Model T Actuators

## Current

T5            T10  
T12

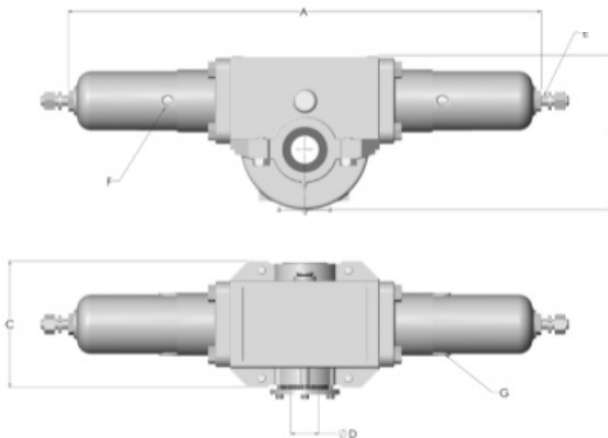
## Legacy

Spare parts are available for  
legacy products

T2            T3  
T4            T5  
T10          T11  
T12          T13  
T12B        T13B  
T14          T15  
T18          T19  
T20          T21



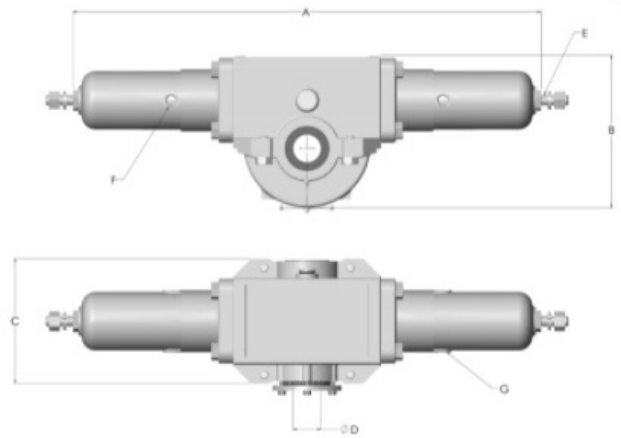
Model T10



## Specification

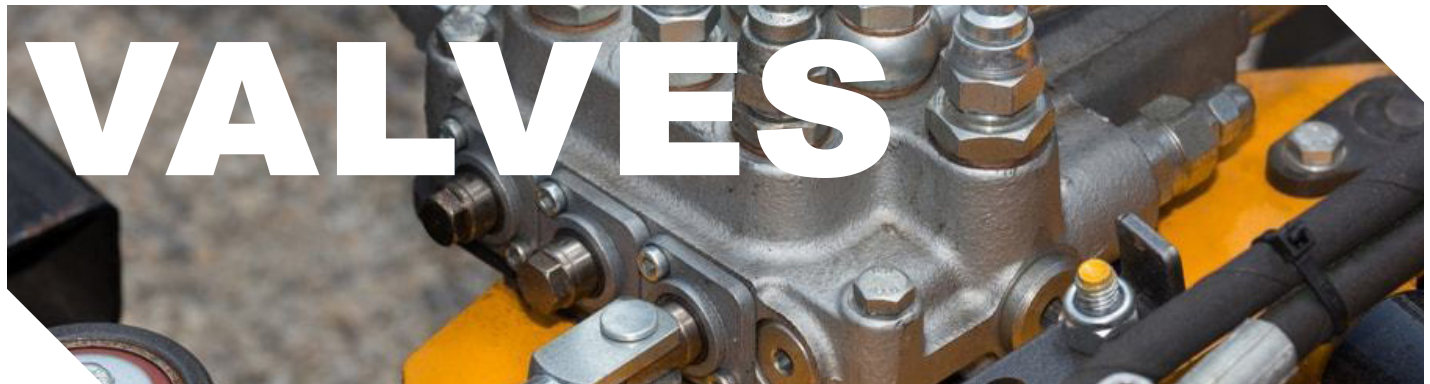
Torque (ft.lb)	5,280
Pressure (psi)	1,200
Rudder Angle (deg)	2 x 45
Displacement (in <sup>3</sup> )	54.2
A (in)	39 7/8
B (in)	12 7/8
C (in)	9 5/8
Ø* 1 D (in)	2 3/8
E Mounting Stud	3/4-10NC-2A THD x 3-1/4LG
F Port	SAE 08

Model T12

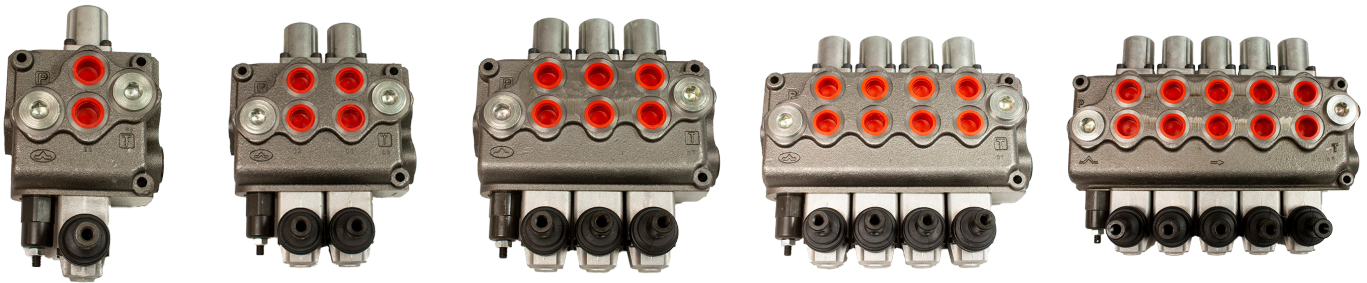


## Specification

Torque (ft.lb)	7,680
Pressure (psi)	1,200
Rudder Angle (deg)	2 x 45
Displacement (in <sup>3</sup> )	77
A (in)	46 3/8
B (in)	15 3/16
C (in)	9 3/4
Ø* 1 D (in)	2 7/8
E Mounting Stud	7/8-9NC-2A THD x 4-21/64LG
F Port	SAE 12



## Monoblock Valves

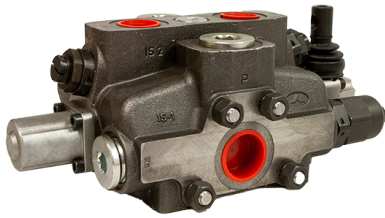


Simple, compact and heavy duty designed monoblock valves from 1 to 6 sections for open and closed centre hydraulic systems.

- Fitted with a main pressure relief valve and a load check valve.
- Available with parallel or series circuit.
- Optional carry--over port (only for parallel circuit).
- A wide variety of service ports and circuit valves.
- Available manual, pneumatic, hydraulic, electro--hydraulic and remote with flexible cables spool control kits

Type	E		F		Weight	
	mm	in	mm	in	kg	lb
SD11/1-P	130	5.12	100	3.94	6.1	13.4
SD11/2-P	174.5	6.87	145	5.71	8.8	19.4
SD11/3-P	219.5	8.64	190	7.48	11.4	25.1
SD11/4-P	264.5	10.41	235	9.25	14.2	31.3
SD11/5-P	309.5	12.19	280	11.02	16.7	36.8
SD11/6-P	354.5	13.96	325	12.80	19.4	42.8

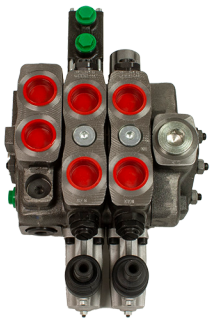
## Sectional Valve



Simple, compact and heavy duty designed sectional valve from 1 to 12 sections for open and closed centre hydraulic systems.

- Fitted with a main pressure relief valve and a load check valve on every working section
- Available with parallel, tandem or series circuit.
- Optional carry-over port.
- A wide range of antishock+anticavitation port valves.
- Intermediate sections for several types of circuit.
- Available manual, pneumatic, electrohydraulic, proportional hydraulic, spool control kits.

## Load Sensing Valve

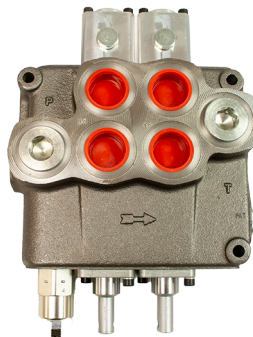


The load sensing valve (L.S.V.) serves the purpose of automatically adapting the brake pressure and therefore the brake force according to the load of the vehicle.

## Monoblock Valve



SD18/1-P



SD18/2-P



Thanks to its robust construction, the SD18 valve is used in agricultural machinery to control motors for large Boom Mowers, and in Industrial Vehicles such as Waste Compactors and drain systems.

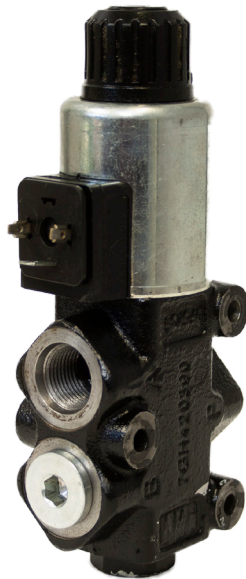
- Single check valve
- Manual, hydraulic, electro-hydraulic and pneumatic controls.

## Diverter Valve



Solenoid valves transform power into a magnetic force that opens and closes valves efficiently. Our direct-acting solenoid valves are ideal for smaller flow rates.

- Monoblock solenoid spool control
- The DFE series flow diverters are used to connect several circuits by different way number configuration.
- Operational Type: Electric.



## Diverter Valve Replacement Coils



- East Coast Hydraulics offers replacement coils in 12V and 24V



## Relief Valve



A relief valve works by providing an excessively pressurized fluid an open path to tank with the goal of reducing work port pressure.



## Spools

Rotary Spools:



SD/18



SD/11



SD/5

Tandam Spools:



SD/25



SD/18



SD/18



SD/18

Motor Spools:



SD/25



SD/18

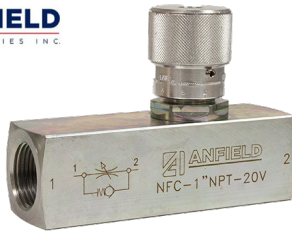


SD/18



SD/18

## Flow Control Valve w/ Check



- In line unidirectional flow controls with integral check valve.
- Zinc plated high resistance steel with graduated adjustment for accurate flow settings.
- Set screw allows the knob to be locked into position.

## Check Valve



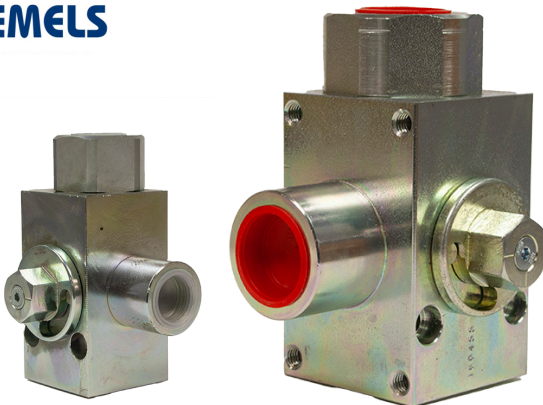
- Commonly installed in applications that backflow would cause an issue.
- Since they are non return valves, they are a cheap, effective, and easy solution to solve a potential issue.

## Needle Valve w/ Check



- A needle valve is used to accurately control flow rates of clean gasses or fluids.
- The adjustments are gradual and smooth for controlling the flow rate.
- they can also be used as a reliable shut-off valve.

## 3-way Ball Valve for Excavator



- Three way ball valve that is designed for use on excavator sticks for controlling attachments.
- The design has no handle and incorporates a hex valve stub for use with a wrench or socket, eliminating the valve handle being caught in use and activating the valve.
- These valves also have holes in the body for ease of mounting, or a weld mounting bracket can be purchased

## Valve Cartridges



# EAST COAST HYDRAULICS

HYDRAULICS | HOSE & FITTINGS | CYLINDERS

## Counterbalance Valve



- Counterbalance valves are used with cylinders to safely hold suspended loads and deal with over-running loads.
- This valve can also be used with hydraulic motors and is then commonly called a brake valve

## Shuttle Valve



- A shuttle valve is a type of valve which allows fluid to flow through it from one of two sources.
- Its purpose is to seal off one or the other of the inlet ports.

## Double Pilot Check Valve



- This double pilot operated check valve is designed to hold hydraulic cylinders and prevent them from drifting down while your directional control valve is in the neutral position.
- At rest the check valves remain seated, blocking flow from entering and exiting the cylinder and locking the cylinder in place.

## Over Centre Valve



- a pilot-assisted relief valve with an integral free flow check
- The overcenter valve prevents the actuator running ahead of the pump due to the load-induced energy, thereby eliminating cavitation in the actuator and loss of control



## Pressure Reduction Valve



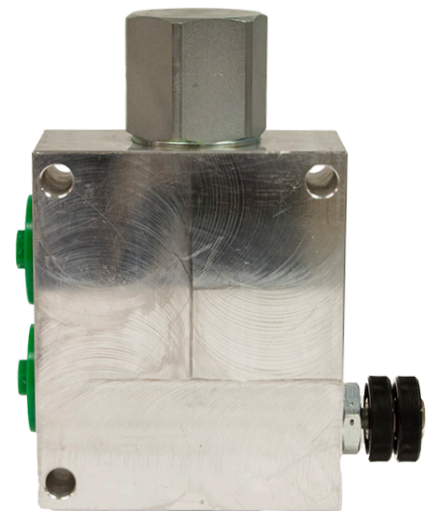
- Designed to withstand even the toughest environments, the pressure reducing valve is a hydraulically operated, diaphragm actuated control valve that reduces higher upstream pressure to lower constant downstream pressure



## Flow Control Valve



- Regulates the flow or pressure of a fluid.
- Flow control valves normally respond to signals generated by independent devices such as flow meters or temperature gauges.



## Ball Valves



- ball valves can be used in a variety of applications including general hydraulic systems and tools, test equipment, and agriculture and mobile equipment.
- Not designed for use with water.

## Full Port Ball Valve



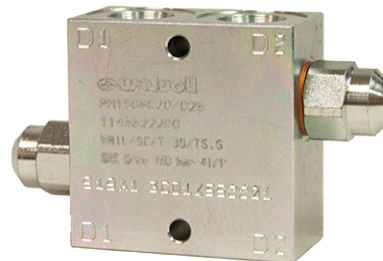
- Has a straight flow path where there is not a reduction of flow as it travels through the valve.
- Fuel line shutoffs for gasoline and diesel equipment.
- Air service lines.
- Water service lines on capital equipment.
- Plant design plumbing requiring total shutoff capability.

## 3-Way Ball Valve



- Shut off flow completely
- Mix flow from two different sources
- Divert flow from one destination to another
- Split flow from one source between two different destinations
- Alternately block flow in one direction while allowing flow to continue in another

## Cross Port Relief Valve



- Double antishock type, direct acting
- The direct acting double cross relief valves regulate and limit the maximum pressure on the line where it operates.

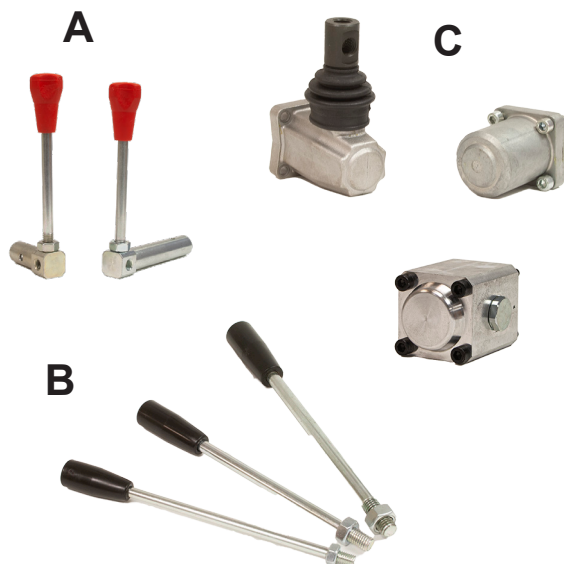
## Hydraulic Manipulator Joystick



- connects directly to low-pressure (pilot) hydraulic valves, allowing an operator to control the high-pressure "working side" of the hydraulic system.



## Handle kits and Switches



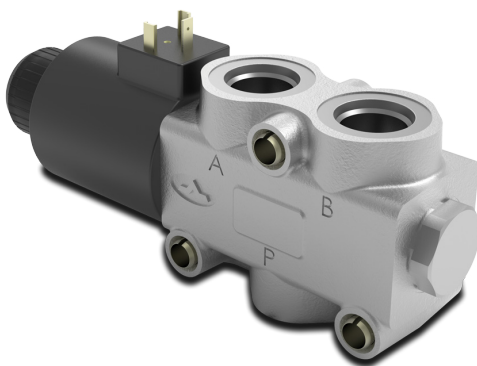
East Coast Hydraulics carries handle kits and replacement switches for all valve applications.

A.) Lever Kit Rotary style, supplied sizes for G-30 and a long shaft G-80

B.) Lever Handle for valves. Sizes carried for SD5, SD11/SD16, SD18/SD25 Valves

C.) Top and Bottom Handle kits for all valve applications.

## Monoblock Solenoid Spool Control

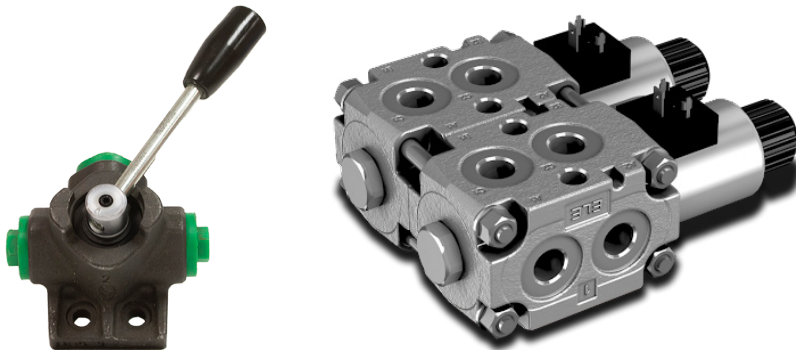


The DFE series flow diverters are used to connect several circuits by different way number configuration.

Operational Type: Electric  
Ways n.: 3 - 6  
Max. Pressure bar - (psi): Up to 315  
(4600)  
Flowl/min - (US gpm): 140 (37)



## Diverter Valve

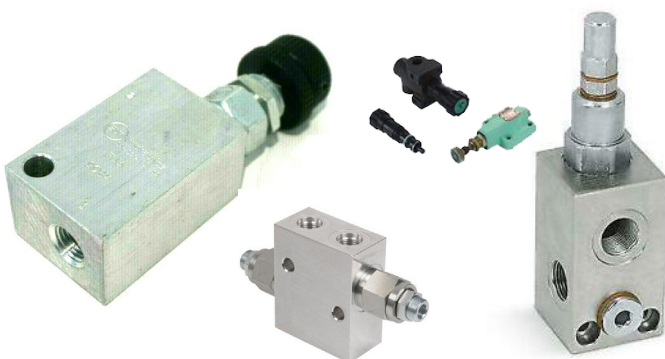


- Manually direct the flow of Hydraulic fluid.

Mechanical Control Monoblock Diverter Valves

Type	Nr of ways	Type	Max. Flow Rating	Max. Pressure
			l/min (US gpm)	Bar (psi)
DF5	2 - 3 - 6	Lever, cam, hydraulic, pneumatic	60 (15.9)	315 (4600)
DFC050	2 - 3 - 6	Cam	60 (15.9)	315 (4600)
DF10	3 - 6	Lever, cam, hydraulic, pneumatic	90 (23.5)	315 (4600)
DFC100	3 - 6	Cam	90 (23.5)	315 (4600)
DF 20	3 - 6	Lever, cam, hydraulic, electrohydraulic, pneumatic	140 (37)	315 (4600)
DF25	3	Lever, cam, hydraulic, electrohydraulic, pneumatic	280 (74)	315 (4600)
DF250	6	hydraulic	250 (66)	350 (5100)
DF350	6	hydraulic	350 (92.5)	350 (5100)

## Relief Valves



Sun Hydraulics' relief valves are all fully adjustable over a wide range of operating pressures up to and including 5000 psi (350 bar) (6000 psi [420 bar] intermittent). (Air piloted versions have lower pressure ranges). Prior to shipping, all Sun relief valves are factory pressure set with a flow of 4 gpm (16 L/min).

# GENERATORS

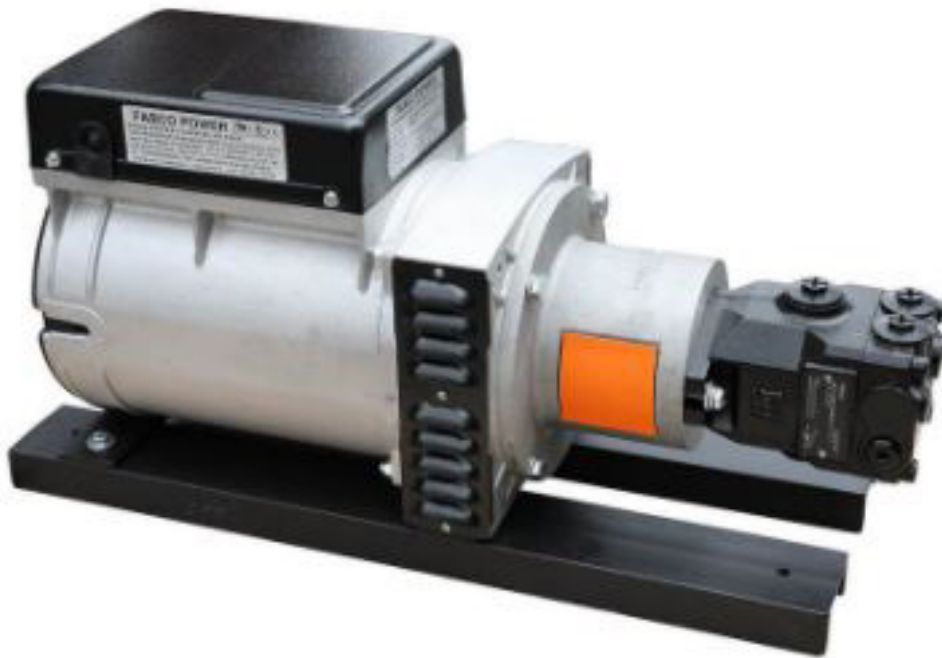


## Single Phase Gear Type Hydraulic Generators

Model	Gpm	Watts
Hydro 300C-6	6	3,000
Hydro 350C-6	6	3,500
Hydro 300CX-6	6	3,000
Hydro 350CX-6	6	3,500
Hydro 300X	8	3,000
Hydro 300X-6	6	3,000
Hydro 350X-6	6	3,500
Hydro 350X	8	3,500
Hydro 400X	8	4,000
Hydro 400X-6	6	4,000
Hydro 400CX-4.5-G	4.5	4,000
Hydro 500CD-16	16	5,000
Hydro 500E	10	5,000
Hydro 600CD-16	16	6,000
Hydro 600E	10	6,000
Hydro 800E	10	8,000
Hydro 800CD-16	16	8,000
Hydro 12KCD-16	16	12,000

### Single Phase Piston Type Hydraulic Generators

Model	Gpm	Watts
Hydro 800EP-11	11	8,000
Hydro 12KEP-11	11	12,000
Hydro 14KEP-11	11	14,000
Hydro 20KP-11	21	20,000



### 3 Phase / Piston Type Hydraulic Generators

Model	Gpm	Watts
Hydro 12KP-21-3	21	12,000
Hydro 8KEP-11-3	11.5	8,000
Hydro 12KEP-11-3	11.5	12,000
Hydro 13 KVA-P-21-3	21	13,000
Hydro 15KEP-21-3	21	15,000

### 3 Phase Gear Type Hydraulic Generators

Model	Gpm	Watts
Hydro 8KCD-16-3	16	8,000
Hydro 12KCD-16-3	16	12,000
Hydro 15KCD-16-3	16	15,000

## Harrison Generators

### What Are Harrison Standard Series Generators:

The Standard Series hydraulic generators are engineered to integrate with existing on-board hydraulic systems, providing an option for simple, reliable, mobile AC power. Each model is designed with a combination of hydraulic motor, coupler, alternator, and flow control system, that will operate with the flow and pressure of your existing on-board hydraulic system. Traditional portable generators offer too little power and take up too much space. The Standard Series generators provide a reliable output, while offering the flexibility to be mounted in multiple orientations and locations. Using hydraulic motors, instead of the traditional gas engine, provide a power source that operate at 98% efficiency; providing the highest return for your investment. The Standard Series hydraulic generators can also eliminate a "secondary" gas engine generator, and provides an option for simple, reliable, mobile AC power.

### Design Benefits Of The Standard Series Generators:

- Ratings: 3 kW to 40 kW
- Manifold: Attached or remote
- Motors: Bent Axis Piston motor or gear motor
- Alternator: PLUS-POWERED

### Off-The-Shelf Or Fully Customized:

You can choose a Harrison hydraulic generator rating of 3 kW up to 40 kW from our pre-engineered product line; or we can completely customize a hydraulic generator to meet your specifications. Engineers are available to assist in your design.

### Hydraulic System Requirements:

- Use a premium grade hydraulic oil, such as Mobile DTE series oil or an equivalent.
- Optimum operating viscosity is ISO 46 for best performance in all conditions

### Generator Options:

- Available in 60 Hz or 50 Hz.
- Available in 1-phase and 3-phase.
- Available in all voltages
- Custom ratings are available.
- EVERY Harrison generator is fully tested.

### PMG

- Alternator speed: 3,600 rpm (2-pole)
- Hydraulic flow required: 5, 8, or 11 gpm
- Alternator size: Very Small
- Motors used: Gear Motor

### DSV

- Alternator speed: 3,600 rpm (2-pole)
- Hydraulic flow required: 10 gpm
- Alternator size: Small
- Motors used: Bent Axis Piston

### DAS

- Alternator speed: 3,600 rpm (2-pole)
- Hydraulic flow required: 10 or 12 gpm
- Alternator size: Medium
- Motors used: Bent Axis Piston

### DPC

- Alternator speed: 1,800 rpm (4-pole)
- Hydraulic flow required: 10-30 gpm
- Alternator size: Large
- Motors used: Bent Axis Piston

Model	PMG	DSV	DAS	DPC	TEFC
3.0 kW	●				
3.5 kW	●				
3.6 kW		●			
4.0 kW	●				
4.8 kW					
5.0 kW	●				
6.0 kW		●	●		
8.0 kW			●		
10.0 kW			●	●	●
12.0 kW			●		
14.0 kW			●		
15.0 kW				●	●
20.0 kW				●	●
25.0 kW				●	●
30.0 kW				●	●
40.0 kW				●	●

# MOTORS

Used in most hydraulic applications, motors are essential in the conversion of hydraulic energy into mechanical energy. East Coast Hydraulics comes fully fitted with Motors from a fine selection of distributors.

## Eaton ( H ) Series Hydraulic Motors



Designed for medium duty applications, these motors use industry-proven spool valve technology combined with state-of-the-art gerotors. In addition, a wide variety of mounting flanges, shafts, ports and valving options provide design flexibility. Direction of shaft rotation and shaft speed can be controlled easily and smoothly throughout the speed range of the motor, and equipment can be driven direct, eliminating costly mechanical components.



### Benefits:

- High efficiency
- Powerful compact package
- Design flexibility
- Extended leak-free performance

### Applications:

- Agricultural augers, harvesters, seeders
- Car wash brushes
- Food processing
- Railroad maintenance equipment
- Machine tools
- Conveyors
- Industrial sweepers and floor polishers

## Eaton 2000 Series Hydraulic Motors



The popular 2000 Series provides torque up to 7500 lb-in. This proven design is reliable and durable. Eaton has added options that make the motor more flexible to use in a wide variety of applications. The expanded displacement range using patented "Drive in Drive" technology is the latest innovation in the 2000 series of motors



## Eaton 6000 Series Hydraulic Motors

With torque up to 15,000 in-lb and 40 gpm continuous, this motor is packed with power operates very smoothly.

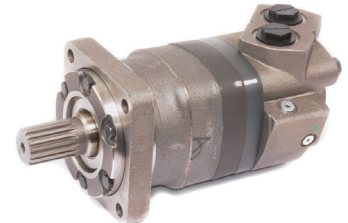


### Benefits:

- Very tough motor for demanding applications
- Can be used in a multitude of industries
- Very easy/flexible to integrate in a system

### Applications:

- Mobile equipment
- Snow Removal, mowing
- Spayer, trencher
- Wood products



## KYB Hydrostar MRH Series Motors



The Hydrostar® Motor is a Radial Piston design that provides a Low Speed High Torque (LSHT) output. This very durable workhorse is used in a wide variety of applications from Fishing to Forestry, Mining to Marine.



Model	Displacement (in³/rev)	Output Torque at 1000 Psi (ft. lbs)	Max Cont. Output Torque (ft. lbs)	Max Cont. Pressure (Psi)	Inter Peak Pressure (Psi)	Speed Range (Rpm)	Max Cont. Power (Hp)	Weight (lbs)
MRH-12	12.7	140	535	3570	4000	3-600	42	81
MRH-30	30.4	350	1300	3570	4000	3-500	85	169
MRH-45	45.5	550	2040	3570	4000	3-400	120	275
MRH-60	61.3	700	2560	3570	4000	3-380	155	363
MRH-80	82.8	950	3560	3570	4000	3-300	175	363
MRH-95	93.4	1100	4130	3570	4000	3-300	190	363
MRH-135	133.9	1600	5940	3570	4000	3-220	200	496
MRH-190	191.6	2300	8675	3570	4000	3-175	230	617
MRH-270	268.4	3150	11648	3570	4000	3-125	225	820
MRH-375	377.5	4290	16300	3570	4000	3-120	300	1150
MR-525	523.9	6250	19520	3000	3300	3-80	220	1698
MRHD540	536.7	6400	19800	3000	4000	3-100	280	1480

## M + S Hydraulics Series Motors



## Options:

- Model - Spool valve, gerotor
- Flange and wheel mount
- Motor with needle bearing
- Side and rear ports
- Shafts - straight, splined and tapered
- Shaft seal for high and low pressure
- SAE, Metric and BSPP ports
- Speed sensing

## Applications:

- Conveyors
- Feeding mechanism of robots and manipulators
- Metal working machines
- Textile machines
- Agricultural machines
- Food industries
- Grass cutting machinery etc

Model	Displacement cm <sup>3</sup> / rev. (in <sup>3</sup> / rev)	Pressure Drop Bar psi	Oil Flow (Cont) l/ min (US Gal/ min)	Max. Output Kw (hp)
MM MLHM	8-50 (0.5 - 3.05)	105/140/200 [1500/2030/2900]	20 (5.5)	3, 2 (4.3)
MP MLHP	25-630 (1.52-38.05)	140/175/225 [2030/2540/3260]	60 (16)	12,8 (17.1)
MR, RW MLHR, MLHRW	50-400 (3.14-24.4)	175/200/225 [2540/2900/3260]	60 (16)	15 (20.1)
HP	25-630 [1.52-38.05]	125/175 [1815/2540]	60 (16)	14,7 (19.7)
HR	50-400 [3.14-24.4]	140/175 [2030/2540]	60 (16)	15 (20.1)
MH MLHH	200-500 [12.3/30.7]	175/200/225 [2540/2900/3260]	75 (20)	18,5 (24.8)
HW	125-550 [7.69-33.55]	205/225 [2970/3260]	75 (20)	21,6 (29)
MS MLHS	80-565 [4.91-34.47]	210/275/295 [3050/3990/4280]	75 (20)	23 (30.8)
MSY MLHSY	200-475 [12.2-28.96]	200/225 [2900/3270]	75 (20)	24 (32.2)
MT MLHT	160-725 [9.83-44.2]	200/240/280 [2900/3450/4050]	125 (33)	40 (54)
MTM MLHTM	200-725 [12.29-44.2]	250/350/400 [3600/5080/5800]	125 (33)	70 (94)
MV MLHV	315-800 [19.18-48.91]	200/240/280 [2900/3450/4050]	200 (53)	56 (76)
MVM MLHVM	315-800 [19.18-48.91]	250/350/400 [3600/5080/5800]	200 (53)	112 (150)

# PUMPS

Pumps have a very important role within a hydraulic system. Pumps are used to convert mechanical energy into hydraulic energy. East Coast Hydraulics comes fully loaded with a variety of the best pumps on the market.

## Anfield Vane Pumps



Anfield's vane pump is designed with high pressure capabilities and provides extended life at reduced pressure. The combination of different cartridges in double and triple pumps allows low flow at high pressure and high flow at lower pressure. This is the intelligent way to optimize your circuit design. The pump also allows a very fast pressure cycle change with a very precise flow repeatability

### Features and Benefits

- Increased Efficiency
- Reduced Noise Level
- Easy Installation

### Markets

- Mobile
- Agriculture
- Marine
- Military

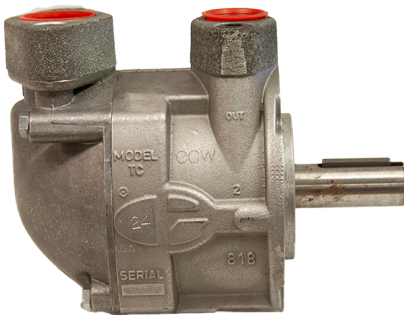
**AT6CM**  
Single Vane Pump



**AT6DCM**  
Double Vane Pump



## Gresen Vane Pumps

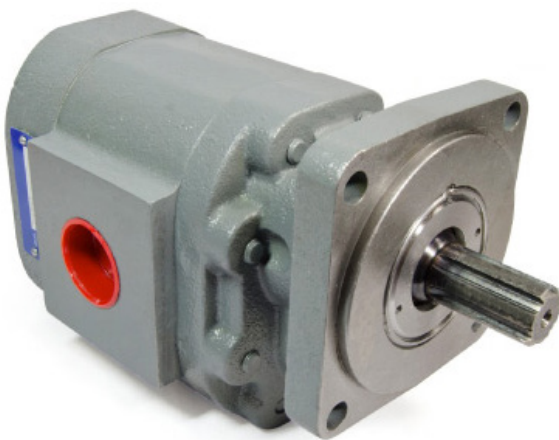
**GRESEN®**

These pumps stand up to tough conditions and are ideal for a wide variety of applications, including commercial fishing boats. Hydraulic Vane Pump designed for heavy duty marine, industrial, agricultural and contractor applications. Pump can be belt and pulley driven.

- 11.00 GPM @ 1200 RPM
- 1 inch NPT Inlet
- 3/4 inch NPT Outlet
- 3/4 inch diameter shaft with 3/16 inch keyway
- Counter-clockwise rotation

Model	Rotation	Max psi	gpm @ 1200 rpm	Inlet	Outlet	Shaft Size
TB12	CW	1500	11.0	1" NPT	3/4" NPT	3/4
TB12	CCW	1500	11.0	1" NPT	3/4" NPT	3/4
TC24	CW	1500	23.4	1 1/4" NPT	1" NPT	1
TC24	CCW	1500	23.4	1 1/4" NPT	1" NPT	1

## Metaris Gear Pumps



Genuine Metaris MH37 series bearing pumps & motors are available in 9 different gear sizes with a variety of mounting flanges, shaft configurations and porting options. Multi-section units, piggyback designs, dowelled assemblies & flow dividers are all also available. With ductile iron housings, these pumps offer pressure ratings as high as 2500 psi for the most demanding of applications. The MH series are perfect alternatives to other gear pump products from Commercial®/Parker® and Muncie®

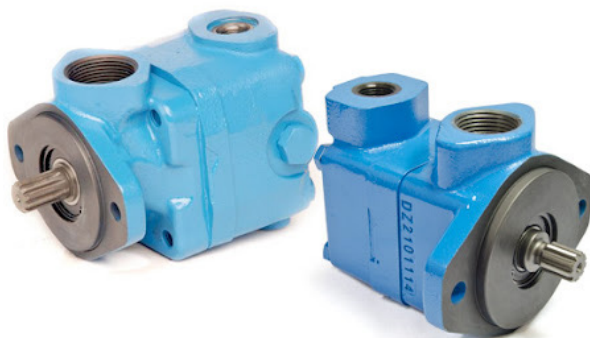
## EAST COAST HYDRAULICS

HYDRAULICS | HOSE & FITTINGS | CYLINDERS

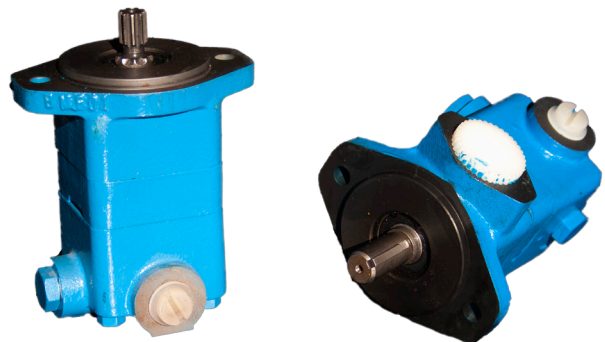
### V10 & V20 Vane Pumps



With an extensive range of displacements, Eaton V10 and V20 vane pumps are designed to work in a variety of low- to medium-pressure mobile and industrial applications. Widely used as pilot and auxiliary pumps for complex industrial systems, they are also common in heavy-duty trucks and interstate buses.



### V10F Vane Pumps



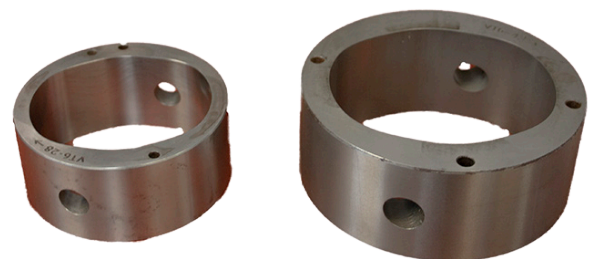
Vickers vane pump is designed for low noise work and the development of high-pressure high-performance vane pump, the internal use of circular vanes to improve the stator and leaf life; stator with high-order no impact transition curve, the pressure and flow pulsation minimum, The noise is lower.

### Hydraulic Pump Shafts



Replacement shafts for our pumps, comes in Keyed or Splinned for you application.

### Cam Rings for Pumps



The stator ring (CAM ring) is a round metal component with fixing elements on the outer surface. The inner surface is in contact with the vanes as the rotor rotates.

## Casappa Gear Pump



- High efficiencies
- Integrated outboard bearings for heavy duty applications
- Multiple units available in standard version, common inlet and separated stages
- Electro-hydraulic fan drive system
- Custom design

## Direct Drive Electric Clutches

### Electric Clutches

Pitts H-Series electric clutches and mounts have become a standard specification for many marine hydraulic systems throughout the industry. The clutches and mounting brackets are designed for direct fit to any SAE A, B or C face hydraulic pumps.



Volts	Amps	Shaft	Mount	Max. rpm	Weight lb.	Model
<b>200 ft. -lb.</b>						
12	6	7/8" Splined	SAE B 2 or 4 bolt	3600	30	13394
12	5.6	1" Keyed	SAE A 6-bolt	2500	27	13418
24	2.8	1" Keyed	SAE A 6-bolt	2500	26	13898
<b>400 ft. -lb.</b>						
12	7.6	7/8" Splined	SAE B 2/4-bolt	3600	44	13589
24	3.8	7/8" Splined	SAE B 2/4-bolt	3600	44	13859
12	7.6	1 1/4" Splined	SAE C 2/4-bolt	3600	44	13378
12	7.6	1 1/4" Keyed	SAE C 2/4-bolt	3600	44	13538
24	3.8	1 1/4" Splined	SAE C 2/4-bolt	3600	44	13856
<b>1,000 ft. -lb.</b>						
12	7.6	1 1/4" Splined	SAE C 2/4-bolt	3000	76	13635
12	7.6	1 1/4" Keyed	SAE C 2/4-bolt	3000	76	13557
24	3.8	1 1/4" Splined	SAE C 2/4-bolt	3000	76	13902
<b>1,500 ft. -lb.</b>						
12	7.6	1 3/4" Splined	SAE D 2/4-bolt	3000	118	14153-B
24	3.8	1 3/4" Splined	SAE D 2/4-bolt	3000	118	14154-B

## Belt Drive Electric Clutches



Volts	Amps	Shaft	Mount	Max. rpm	Weight lb.	Model
<b>90 ft. -lb.</b> For Gresen TB pumps. 6" Diameter, 2 groove pulley for 1/2" belts						
12	4.0	3/4" Keyed	SAE A 2-bolt	5000	14	13233
24	2.0	3/4" Keyed	SAE A 2-bolt	5000	14	13817
<b>200 ft. -lb.</b> For Gresen TB pumps. 8" Diameter, 2 groove pulley for B section belts						
12	6.0	1" Keyed	SAE A 6-bolt	3600	28	13403
24	3.8	1" Keyed	SAE A 6-bolt	3600	28	13500

## Drivelines

**SPICER®**



### Direct Drive Electric Clutches - 200 ft.-lb

11-820C	Spicer-1310
---------	-------------

### Direct Drive Electric Clutches - 400 ft. -lb. & 1,000 ft. -lb

11-821C	Spicer-1410
---------	-------------

### Direct Drive Electric Clutch - 1,500 ft. lb.

11-822C	Spicer - 1,550
---------	----------------

## Pump Brackets

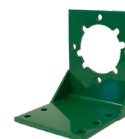
Complete your set-up with East Coast Hydraulic motor pump mounting brackets in a range of sizes suitable for gear and piston pumps and motors. We carry light- to heavy-duty mounting bracket solutions for use with low to high-speed hydraulic motors.



Adjustable Pump Bracket



Foot Mount Brackets



A-4 Bolt



D Style

# FILTRATION



## High Pressure Filters



High pressure filters are used as process filters to protect individual valves or the entire hydraulic circuit from contamination, as per ISO 4406.

- 11 Versions with operating pressures ranging from 1595 - 6090 PSI.

Model	Working Psi	Gpm
FMP 039	1595	21
FMP	4640	132
FHP	6090	166
FMM	6090	79
HPB	6092	79
FHA 051	8120	40
FHD	5075	66

## Return Filters

Return filters are used mainly in open loop applications as process and safety filters. Available in 4 styles:



- SMP semi-immersed filters for mounting to the oil tank with external/internal filter element
- MPT semi-immersed filters for mounting to the oil tank with external/internal filter element
- MHP/MPI semi-immersed filters for mounting to the oil tank with external/internal filter element
- FRI semi-immersed filters for mounting to the oil tank or in-line, available in the single or duplex versions, with external/internal filter element

## Replacement Elements

Replacement filter elements for hydraulic fluid systems.



## Replacement Elements



MP Filtri offers two types of portable, compact filter carts which are ideal for use on a wide variety of in-plant machinery or mobile hydraulic equipment. These units are ideal for fluid transfer, cleaning up existing systems or pre-filtering new fluids. Oil is circulated at approximately 5 or 10 gpm through two filters connected in series.

## Generation 2 Filtration

**GENERATION 2**  
FILTRATION™



Generation 2™ Oil Bypass Filtration Systems are designed to filter oil in a wide range of applications including:

- Engines
- Hydraulics
- Transmissions
- Portable Filter Carts
- Water Glycol

The oil passes through a 4 stage **1 Micron** Oil Bypass Filtration System, polishing the oil.



## Spin-on Filters



Spin-on Filters are used in a variety of applications, and primarily used to protect individual pumps, valves or the entire hydraulic circuit from contamination. Versions available with operating pressures ranging from 174 to 508 PSI.

Spin-On filters can be used for the following purposes:

- Suction filters
- On the return circuit, for mounting on the line or on the tank cover
- In-line for low and medium pressures

Spin-On filters are available in 4 configurations :

- Single cartridge in-line
- In-line with two parallel cartridges on the same axis
- In-line with two parallel cartridges mounted side by side
- With single cartridge flange for installation to the tank cover

All versions may be equipped with visual and/or electrical blockage indicators

Series: MPS-050/070, MPS-100/150,  
MPS- 200/250, MPS-300/350,  
MPS-400, MSH050-150,  
MST 050-150

## Strainers



Strainers are used to remove the **Larger** particles and other unwanted contaminants from hydraulic fluids.

- Submerged suction filter
- Flow rates up to 875 l/min (231 gpm)
- Threaded connections from 3/8" to 3" BSP/NPT

## Clogging Indicator

Filter elements are efficient only if their Dirt Holding Capacity is fully exploited. This is achieved by using filter housings equipped with clogging indicators.

These devices trip when the clogging of the filter element causes an increasing in pressure drop across the filter element. The indicator is set to alarm before the element becomes fully clogged



MP Filtri can supply indicators of the following designs:

- Vacuum switches and gauges
- Pressure switches and gauges
- Differential pressure indicators

## Water Removal Carts



With the mobile filter systems, HYDAC offers an extensive product range of professional solutions for hydraulic servicing and maintenance. They are used for the filtered filling and/or repumping of hydraulic and lubrication media, for flushing at the time of startup or for continuous offline filtration. Convenient mobile devices are used for the separation of solid particles (with or without integrated fluid sensors) on several plants at once:

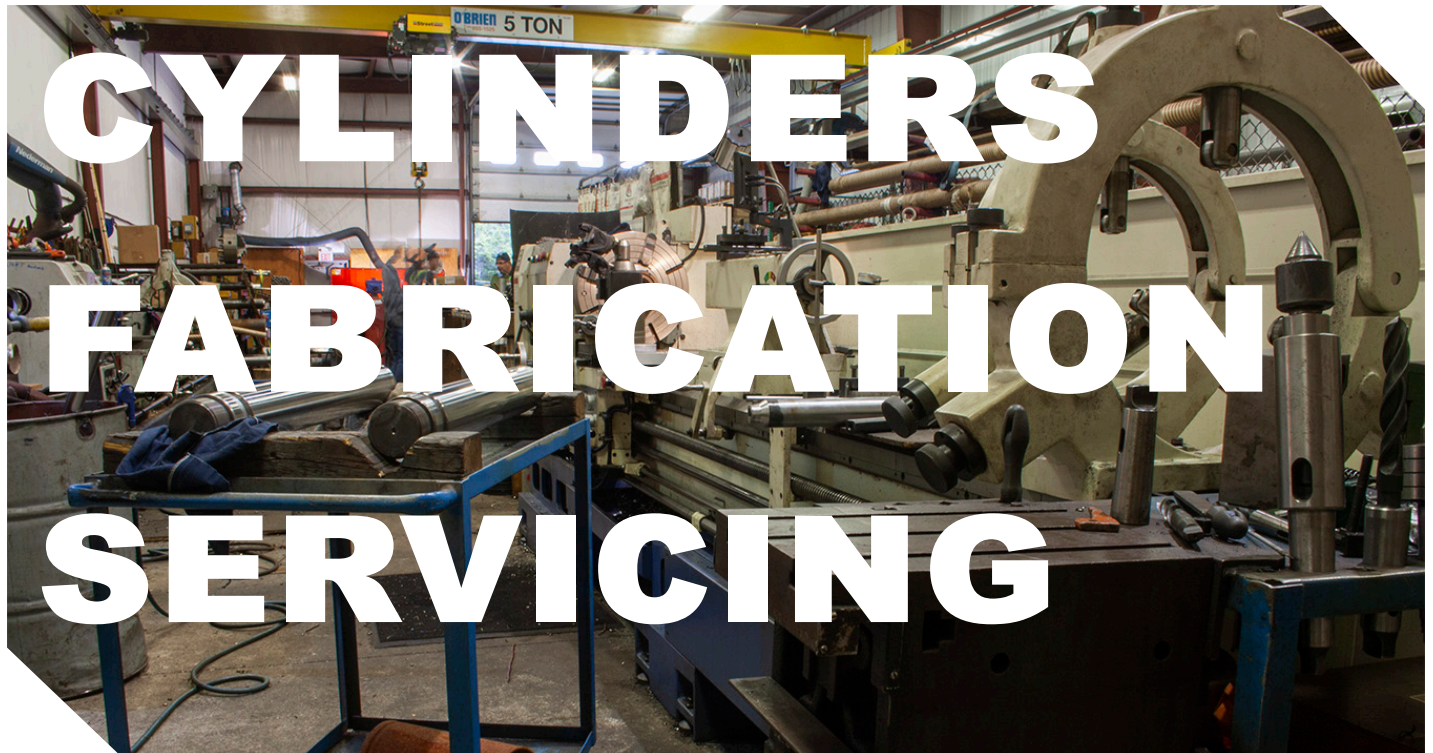
- Portable filtration units
- Mobile filtration units
- Clean filling and flushing
- Flexible utilisation on different plants
- Relieved load on the main flow filter
- Increased system availability
- Increases the service lifetime for hydraulic and lubrication media
- Reduction of Life Cycle Cost

## Desiccant Breather/ Caps



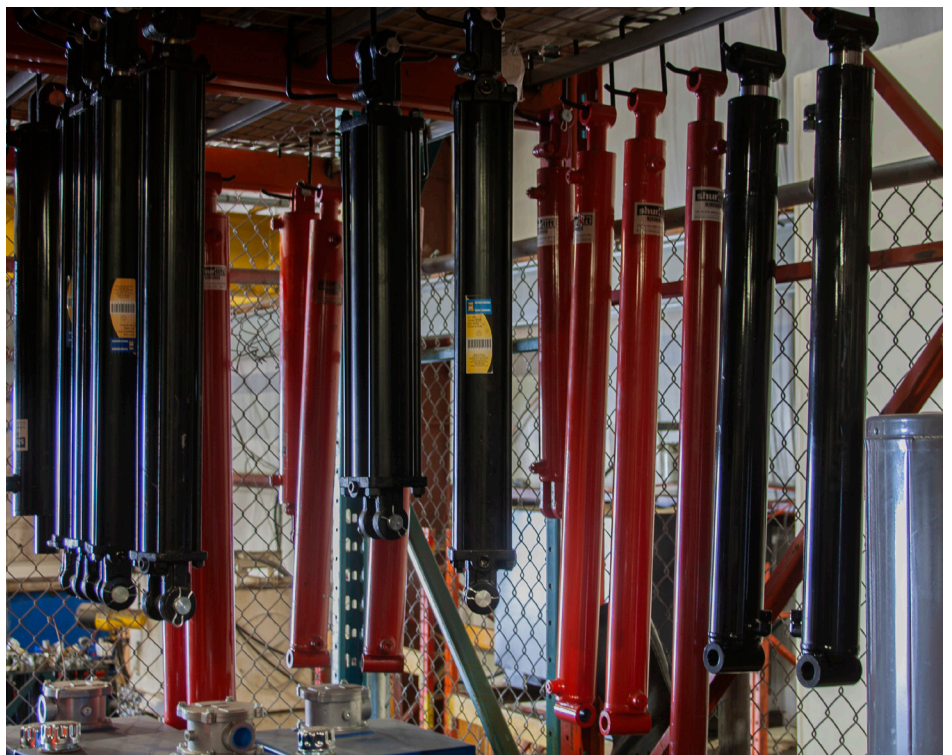
Replaces standard dust or OEM breather caps, offering better filtration even against the smallest of particulates.

Replacement Caps offered upon request.



## Hydraulic Cylinders

East Coast Hydraulics stocks a full line of hydraulic cylinders for whatever your need. If we do not have the exact cylinder required, we design, fabricate, and test hydraulic cylinders in our shop.



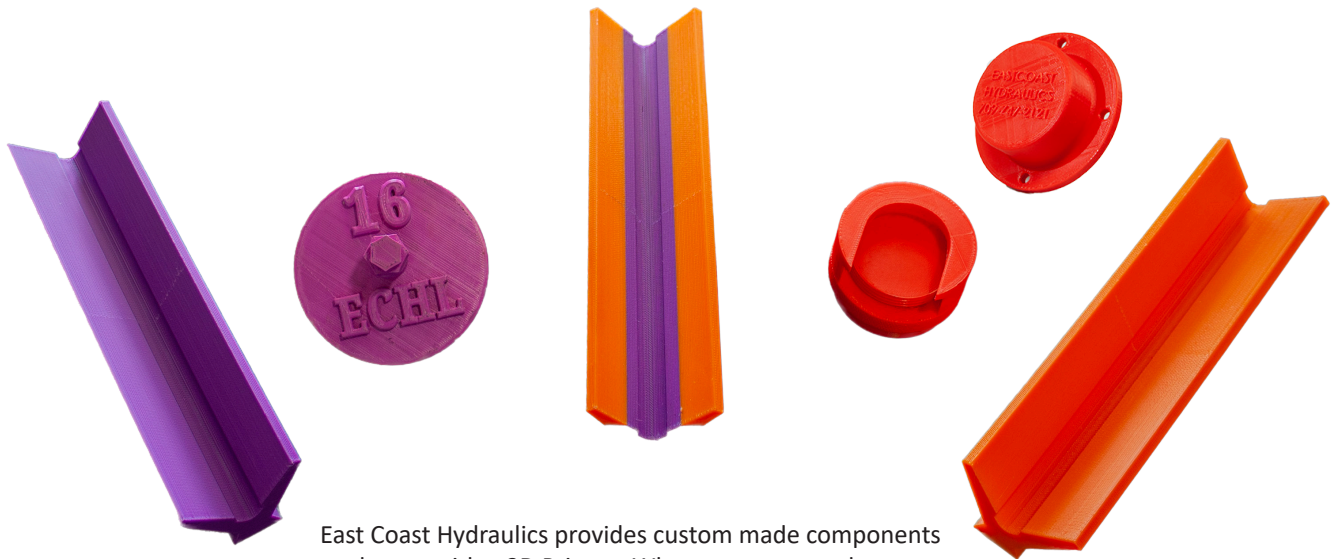
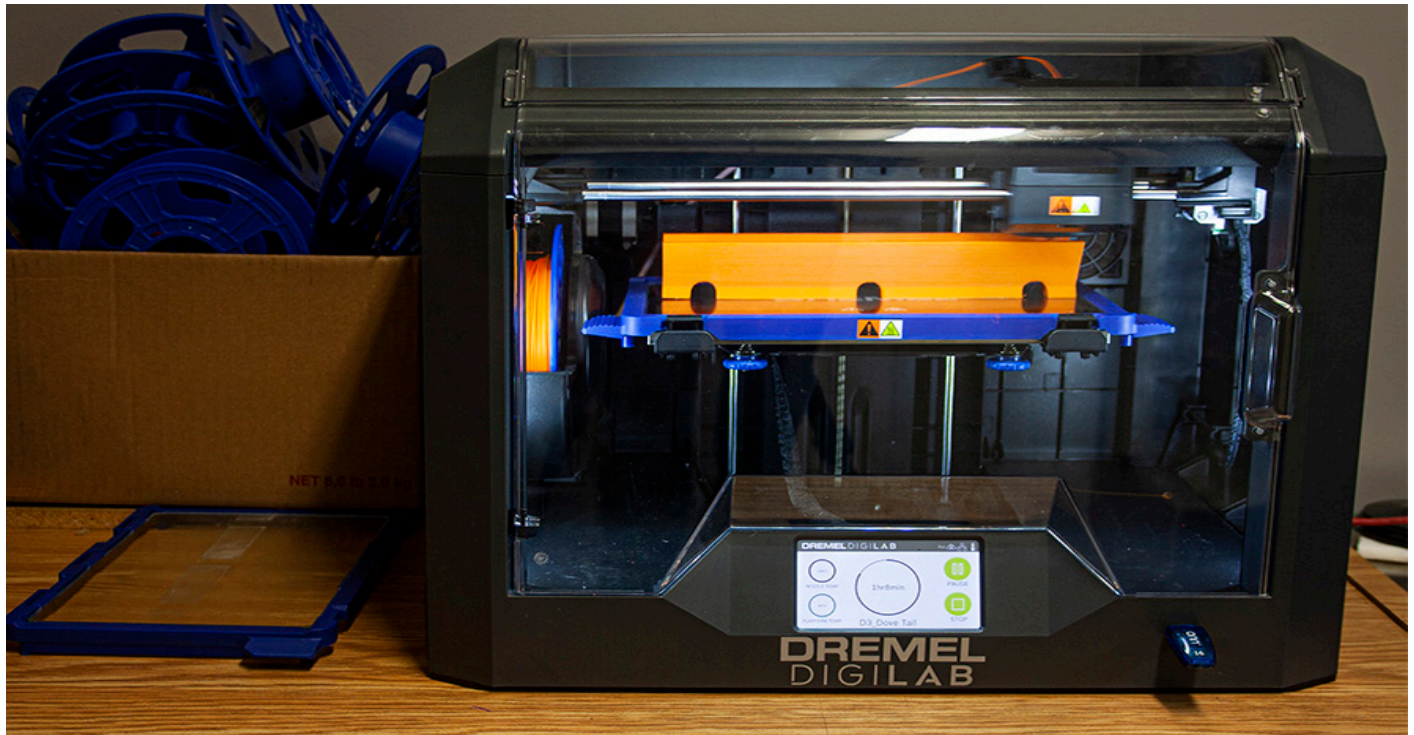
## Tuxco™ Cylinder Bench



East Coast Hydraulics is a leading builder and distributor of hydraulic cylinders. Our Cylinder shop is complete with 2 technicians with over 40 years of experience in cylinder repair – complete with 4 lathes and the only Tuxco™ Cylinder Bench in the province. Repair hydraulic cylinders faster, safer and more profitable than ever with East Coast Hydraulics Tuxco Hydraulic Cylinder Servicer.



## Dremel 3D Printing



East Coast Hydraulics provides custom made components and parts with a 3D Printer. Whatever your need we can create a CAD drawing and produce a product.



## O-Rings/ Seals



**O-rings:** are mechanical gaskets with a round cross section. They are used to prevent gas and fluid leaks in static and dynamic applications and are manufactured from various types of elastomers. Some of the common types of O-ring materials include PTFE, Nitrile (Buna), Neoprene, EPDM Rubber and Fluorocarbon (Viton).

**Hydraulic seals:** are used hydraulic in cylinders to seal the openings between various components in the hydraulic cylinder.

Seals are either moulded or machined and are carefully designed using sophisticated simulation software.

Products perform both dynamic and static sealing. The range includes piston, rod, buffer and wiper seals, as well as guide rings and O-rings

# HOSE, FITTINGS & TUBING

## Overview

Our hose and fittings department has a full compliment of carbon and stainless steel fittings offered in both standard and metric sizes. Our shop carries more inventory than any other vendor on the island and has another 17 locations that our re-selling partners offer the same products.

East Coast Hydraulics prides itself on the vast inventory of hydraulic hoses and fittings and also stainless steel tubing and fittings. With our expansive in stock items we are ready to supply you with the components you need, or we can fabricate hose or tube assemblies on site. Jeff, Kevin, and Gerald lead our Hose & Fittings Shop and are ready to help you with any questions you may have, come in and visit us in our store and see for yourself the province's largest variety of performance hose and fittings, hydraulic hose and fittings, and industrial hose and fitting products.



## Overview

### Technical Services for Hydraulic Lines

Our ISO 9001: 2015 Quality Management Program allows us to offer Certified Reports for Pressure Testing and Cleanliness levels for hydraulic line assemblies. We can also offer customized reports based on customer's unique requirements.

### Our Shop

Our Shop is laid out for production so that the customer has little wait time while we assemble any hydraulic line for them. While the most popular fittings are on the production table, the line allows for easy of measuring, cutting, assemble, and crimping of the hose assembly.

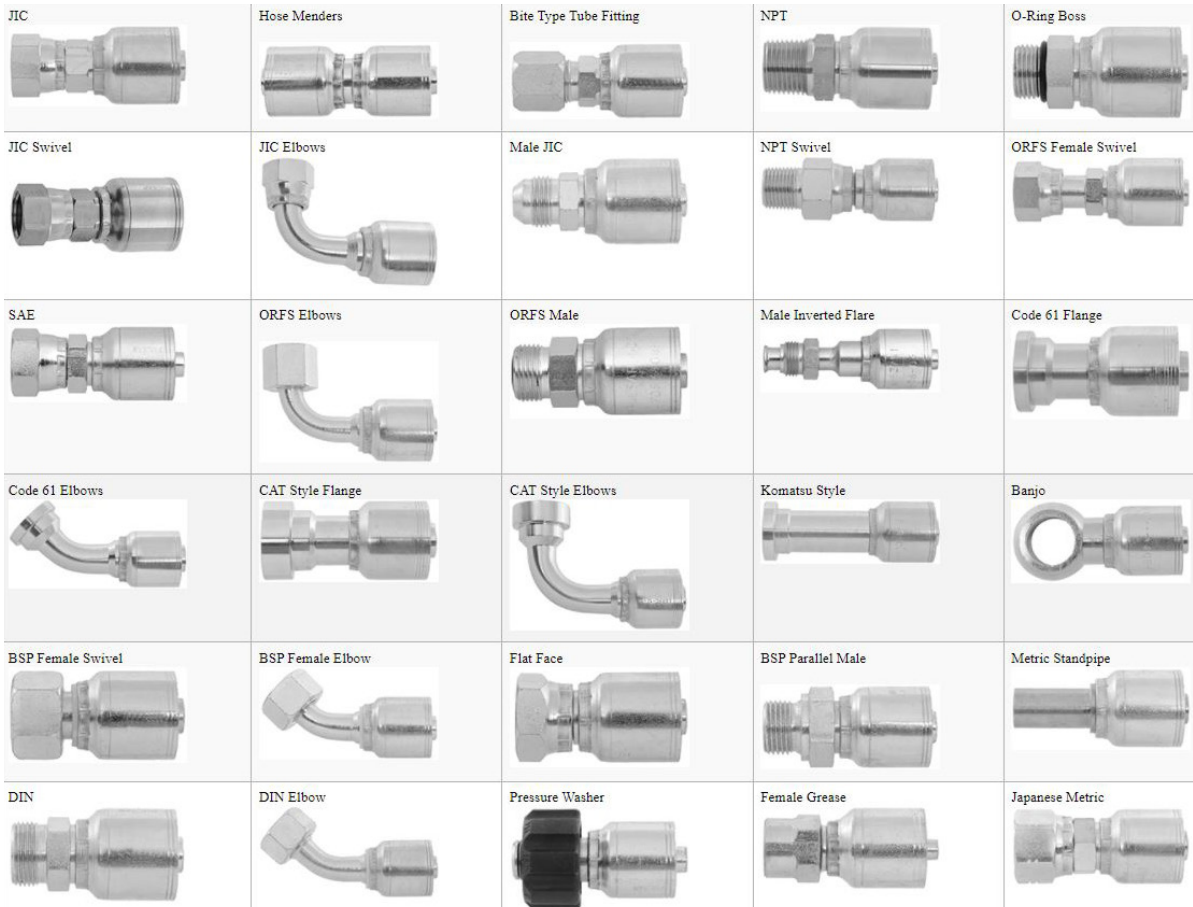
If you have any requirements for regulations or standards that you must meet, we offer a variety of technical services for hose assemblies.

### Products

East Coast Hydraulics is a proud authorized distributor for Green Line<sup>®</sup> Hose & Fittings Ltd and their main line of Pulsar<sup>®</sup> Hydraulic Hoses. We also can offer their full line of Industrial Hose and Fitting products as well.

We carry the most comprehensive stock at the highest levels of inventory to be ready to meet your hydraulic hose requirement. It is our goal to meet your expectation so that you do not experience downtime, we understand and appreciate the relationship we have with our customers and work hard to keep your trust in us.

## Fittings & Adapters





## Nova 2



### Working Pressures:

04-5800psi 06-4800psi 08-4000psi 10-3600psi  
12-3100 psi 16-2400psi 20-1800psi  
24-1300psi 32-1150psi.

Double Wire Braid, Seamless oil resistant nitrile rubber Nova2 is a high pressure, two wire braid hose which meets the requirements of SAE 100R2AT & EN 853-2SN

This hose has an MSHA approved cover for flame retardance. Temperature Range -4°C to 100°C, petroleum based fluids intermittent to 125°C

## Nova 2 Ice-Breaker



### Working Pressures:

04-5800psi 06-4800psi 08-4000psi  
12-3100 psi

Double Wire Braid, Seamless oil resistant nitrile rubber Ice-Breaker is designed for use on machinery operating in extremely low temperatures where conventional hoses become too stiff and brittle. SAE100R2AT

## Nova Spiral 12



### Working Pressure:

12-4100psi 16-4100psi 20-4100psi

Four Spiral Wire, Seamless oil resistant neoprene rubber. An extremely flexible hose designed to operate at high working pressures. SAE100R2AT & MSHA Approved.

This hose has an oil and abrasion weather resistant black synthetic rubber cover.

Temperature Range -40°C to 121°C

## Nova Spiral 12 Plus



### Working Pressure:

06-6100 psi 08-6100psi 10-6100 psi  
12-5500psi 16-5100psi 20-5100psi  
24-4100psi 32-3000psi

Four Spiral Wire, Seamless oil resistant neoprene rubber compact design with half the bend radius of conventional SAE100R12

This hose has an oil and abrasion weather resistant black synthetic rubber cover MSHA Approved.

Temperature Range -40°C to 121°C with peak to 125°C

## Nova Spiral 12 Plus



### Working pressure:

6100 psi

NOVA 15 is recommended for extremely high pressure and high impulse applications. This robust hose meets the dimensional requirements of SAE 100R15 and SAE 100R13 in sizes up to 1-1/2", while exceeding both pressure and bend radius requirements. NOVA 15 is often used on hydrostatic transmissions.

## Auto & Truck Hose

### G611 Fuel Line



Fuel line hose is specially compounded to withstand the high under-the-hood temperatures found in today's automobiles. G611 meets SAE 30R7 specifications and is now available in convenient 25 ft. spools or 50 ft. coils as well as 250 ft. reels.

### G384 Silicone Coolant



For heavy-duty heater and coolant applications, use G384 as it meets or exceeds SAE20R1, Class A specifications. Because silicone does not harden and crack with age, silicone radiator hose will give a service life of one-half million miles or more on highway trucks and buses - much longer than standard coolant hoses.

### G3846 & G3896 Silicone Elbow Connectors



These useful elbows have 6" arms that can be cut to length to fit a variety of applications.

### 111-03 Grease Whips



Grease Whips provide a flexible connector between the grease gun and grease fitting to allow easier access to the tight and awkward spaces where grease nipples always seem to be located. Our hoses are rubber to remain flexible at low temperatures and feature a wire braid for better life and coupling retention.

### G354 Silicone Turbo Charger



Green Line Turbo Charger hoses are reinforced with four plies of high temperature Nomex fabric as well as stainless steel restrictor rings. These features combine to give superior performance under the most demanding applications.

### G388 Softwall Marine Coolant & Exhaust



G388 is for straight connections in engine cooling and marine wet exhaust applications. It is particularly useful where installation space is limited and a wire reinforced hose cannot be compressed enough to fit between the end connections. G388 meets SAE 2006R1 specifications for marine wet exhaust service.

## EAST COAST HYDRAULICS

HYDRAULICS | HOSE & FITTINGS | CYLINDERS

### G355 Silicone Connector



In some applications where the distance between the engine and radiator connection is very short, the vibration and movement will cause premature failure of standard coolant hoses. G355 connectors (often known as hump hoses) feature corrugated sections supported by steel rings that allow for much greater flexing than a standard hose.

### G1212 Nylon Air Brake



Nylon Air Brake Tubing is used for air break, instrumentation, and air accessory lines on truck and trailer and other mobile air braking systems. Nylon tubing offers a weight and cost savings over wire and fabric reinforced rubber hoses where the abrasion and kink resistance of heavier hoses is not required. G1212 conforms to DOT FMVSS 106 requirements as well as SAE J844 specifications.

### G212 Air Brake Hose & Assemblies



Our Air Brake hose meets the Society of Automotive Engineers (SAE) and Department of Transport (DOT) specifications for tractor-trailer reach lines and brake chamber hoses. G212 is branded with SAE J1402C Table A and DOT FMVSS 106 approvals and our assemblies are tagged with the part number which defines size and length. Our assembly fittings are permanently attached with a solid male NPT fitting on one end a female swivel with male pipe adapter at the other end. We also offer G212L Arctic Air Brake hose for northern winters where standard hose becomes too stiff and brittle. It meets the same as G212 but has a wider temperature range.

### CR Garage Exhaust Hose and Adapters

Our crush-proof garage exhaust hoses are now all 11 feet long and feature a thicker wall for increased life. Sizes up to 4" have tapered screw-together ends instead of cuffs. For 5" and 6", use CR-AC adapters with 1/2" diameter clearance around the tailpipe. Tailpipe adapters provide and air flow that keeps exhaust temperatures within acceptable limits, thus greatly extending hose life.



## Marine Hose

### G381 Hardwall Marine Coolant & Exhaust



Hardwall Marine Exhaust is recommended for wet exhaust service on marine engines and is also designed to handle water intake and general radiator applications. G381 meets SAE J2006 Type R2 specifications for marine exhaust hose.

### G900 Clear Vinyl Tubing



Green Line Clear Vinyl Tubing is soft, easy to handle, and crystal clear to allow full view of the materials being conveyed. It is economical for use on drains and bait box recirculating lines but is also made from non-toxic compounds to handle drinking water.

### G941WB Clear/Gray Heavy Duty Bilge Hose



Heavy duty bilge hose is designed for applications where high flexibility is required in a durable hose. G941WB is made from FDA approved materials so that it can be used for portable water fill lines.

### G946 Reinforced Bilge & Vacuum Hose



The fabric reinforcing in the wall of G946 provides excellent resistance to constant flexing while still providing a very lightweight and flexible hose. Reinforced vacuum is popular as a superior bilge pump and vent hose, since it resists cracking, yet will conform to very tight bends without collapsing.

### G911 Vinylite



G911 is a heavy-duty food grade hose with higher working pressures than standard marine portable water lines. The extra reinforcement, heavier construction and wider size range make it popular for a variety of marine applications including washdown, portable water fill, bilge and pump discharge lines.

### G380 & G380B Rubber Sanitation Hose



Our rubber sanitation hoses offer resistance to odor permeation and toilet chemicals. They are suitable for all head and holding tank connections. The butyl rubber in our white hose has maximum permeation resistance, while our black SBR hose offers a lower priced alternative to compete with other hoses found on the market.

## EAST COAST HYDRAULICS

HYDRAULICS | HOSE & FITTINGS | CYLINDERS

### G912 Reinforced Vinyl Hose & Assemblies



G912 is designed for hot and cold pressurized water lines. The hose features an opaque white tube which reduces algae growth in cold water lines. The cover is clear and has a blue tracer. Where cold and hot water lines must be identified for correct connections, we recommend G912 cold water and G911 for hot water. When coupled with brass garden hose fittings, it is used for dockside water refilling and deck washdown.

### G940 Outboard Cable Cover



This extremely flexible and lightweight hose was originally designed as a wet or dry vacuum hose. In the marine industry, it is popular for use as an outboard cable cover to bundle and protect cables. The hose is crush-proof because it returns to its original shape collapsed or twisted.

### G941BW Blue Water Suction



G941BW is manufactured using high molecular weight PVC that stays flexible at sub zero temperatures. Most PVC hoses become stiff when used in winter condition, but Blue Water can be used year-round for water suction lines in construction, rental, mining, and agricultural applications. An advantage of G941BW over many EPDM rubber hoses is that it is resistant to degradation in oily conditions. While this hose is not designed for oil applications, PVC offers good oil resistance at moderate temperatures.



## Air Hose

### G924 Premium Air Hose & Assemblies



Our premium Air Hose uses a special hybrid technology compound to give professional users the best all weather hose available. It is soft and supple so it lays out smooth and easy. Coiling up the hose and the end of the day is a breeze. Best of all, Green Line Premium Air Hose stays flexible on the coolest days, when other hoses become stiff as pipe.

### G922 Poly-Air Hose & Assemblies



Poly-Air was the first air hose that used specialty polymers to create a rubber-like feel. G922 has a large following in the construction trades for use with nailing and stapling equipment. Compared to similar rubber hoses, Poly-Air is lighter and smoother so it glides over surfaces easily and with less wear.

### G223 Construction Air Hose & Assemblies



While principally designed for jackhammer and contractor use, this hose is also popular for washdown. G223 features a four-spiral reinforcement and a smooth, bright yellow cover for high visibility. It has an advantage over most other yellow air hoses that it is available in long lengths on reels. Our assemblies come complete with crimped or clamped universal style couplings.

### G261 Steel Air Hose



Steel wire reinforced hoses are at the top of our standard air hose range. They are designed for the most severe applications where high working pressure, long life and maximum safety are desired. The high-tensile wire reinforcement allows G261 to withstand the extreme abuse encountered in open-pit or underground mining, heavy construction, and rock quarries.

### G1232 Yellow Dragon Hose



Yellow Dragon represents a revolution in high pressure air hoses. A high-tenacity polyester reinforcement combined in a unique process with a special rubber polymer results in a hose tough enough to handle construction and resource applications. Yet this hose weighs half as much (or less) than conventional hoses and coils up flat when not in use.

### G242 Rock Drill Hose



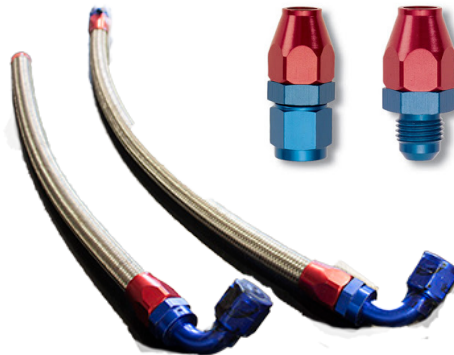
Rock Drill is a heavy-duty, mandrel-built hose. It is designed to give top performance in severe working conditions. While G242 is kink-resistant and very flexible, the cover is designed for extra abrasion resistance. Rock Drill is very popular in mines and heavy construction sites. Our assemblies come complete with G25 two-lug universal fittings in the smaller sizes or G29 ground joint stems with wing nuts in the larger sizes. Where necessary, we can also offer a competitively priced generic version of this hose as well.

## EAST COAST HYDRAULICS

HYDRAULICS | HOSE & FITTINGS | CYLINDERS



East Coast Hydraulics carries a steady supply of Russell Performance stock. From hoses, adapters, fittings and other accessories. We pride ourselves knowing that we will have what you need. Feel free to drop by our shop for a look.



# HPS

## PERFORMANCE PRODUCTS

HPS Silicone Hose features 4-ply reinforced high temperature material, for which meet or exceed SAEJ20 Standard. HPS Silicone Hose is used by professionals in industries such as high performance racing vehicles, commercial truck and bus, Marine, agricultural and off highway vehicles, turbo diesel, food and beverage, and general manufacturing industries



### Cold Air Intake



HSP's intakes oncrease flow by removing restriction while also pulling in cold, fresh air from the headlight bezel and fender port.

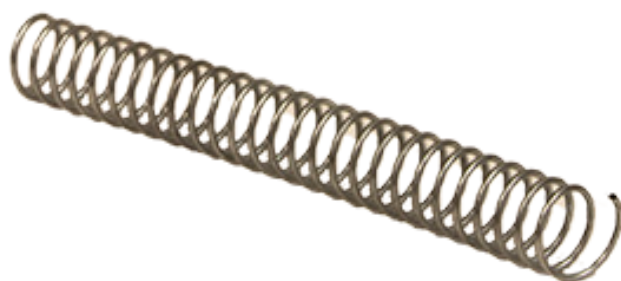
**Features:**

- Increased Performance
- High Strength Silicone Boots
- CNC Machined Sensor Blocks
- Multiple Powdercoat Options Available

## Hose Cleaning and Wrapping



Our Hose and Fittings shop comes fully loaded with hose repair, building, cleaning, and wrapping.



DICSA

# DICSA



DICSA is a worldwide leading manufacturer of stainless steel fittings, and an international benchmark in hydraulic components and connectors.

- Male metric and BSP fittings from port connections often have an o-ring and washer at the base - don't be fooled into thinking they are o-ring boss fittings.
- Male metric fittings connected to steel tube or female hose ends must be measured on the inside socket to confirm whether they are L or S series.
- O-ring face seal fittings have an o-ring on the face of the male fitting.

## What The Numbers On This Chart Mean:

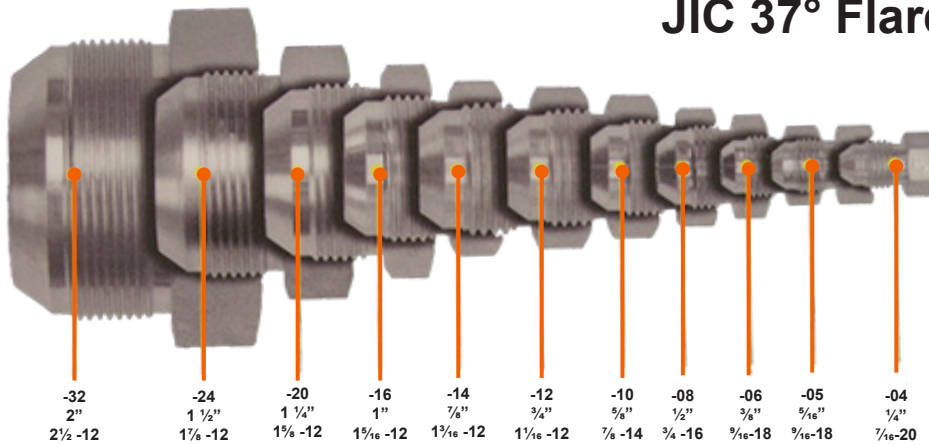
- 12 ● Dash size
- $\frac{3}{4}$ " ● Nominal tube size or pipe size
- $1\frac{1}{16}$  -12 ● Actual thread size & thread pitch

## Thread Designations:

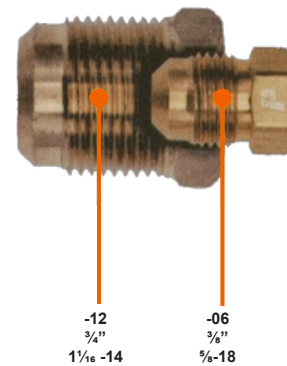
00..... Hose Mender	36..... BSPP Parallel Male
01..... ORB Port Female or Standpipe	38..... BSPT Tapered Male
02..... Inverted Flare Female	60..... Compression/ Bite Type
04..... SAE 45° Female	61..... Metric Standpipe
05..... JIC 37° Female	63..... DIN 24°/60° Light Female
06..... NPSM Female Swivel	64..... DIN 24° Heavy Female
08..... NPTF Solid Female	65..... DIN L. O-Ring Female
09..... SAE Code 61 Flange	66..... DIN H. O-Ring Female
09C ..... Cat Style Flange	67..... French Gaz Female
09H ..... SAE Code 62 Flange	68..... Komatsu Metric Female
09K ..... Komatsu Flange	69..... JIS 30° Flare Female
11..... O-Ring Boss Male	70..... Compression Air Brake
12..... Inverted Flare Male	71..... French Standpipe
14..... SAE 45° Male	72..... DIN 60° Male
15..... JIC 37° Male	73..... DIN 24° Light Male
16..... NPTF Male	74..... DIN 24° Heavy Male
20..... Staple Lock Female	75..... Metric Banjo
25..... BSPP Banjo	77..... French Gaz Male
26..... BSPP Female	78..... Komatsu Metric Male
27..... BSP Flat Seat Female	79..... JIS 30° Flare Male
28..... BSP Non-Swivel Female	83..... ORFS Female
29..... Grease Fitting Female	93..... ORFS Male
30..... Staple Lock Male	



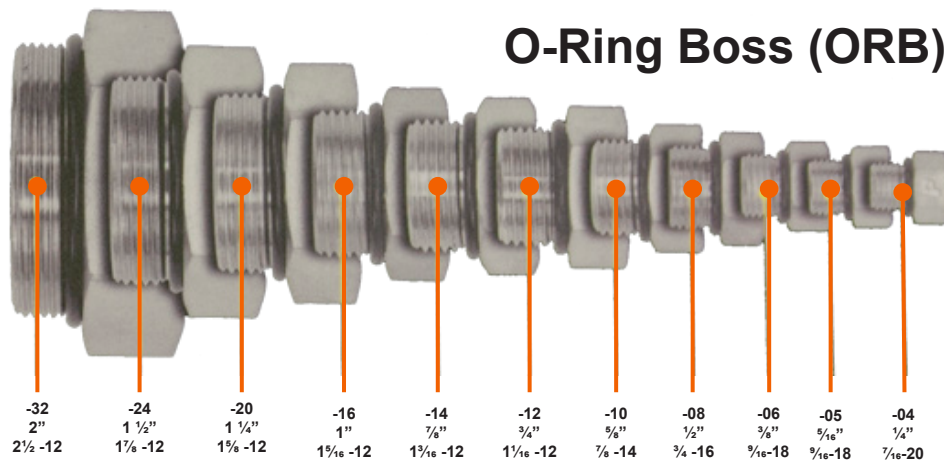
## JIC 37° Flare



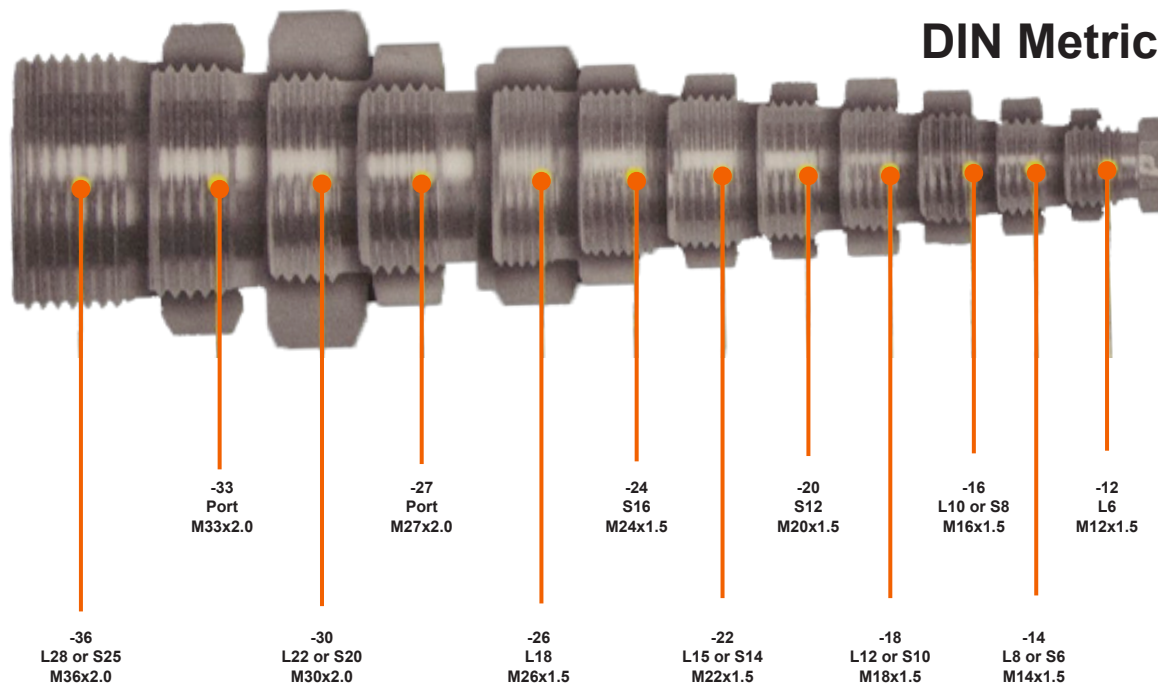
## SAE 45° Flare



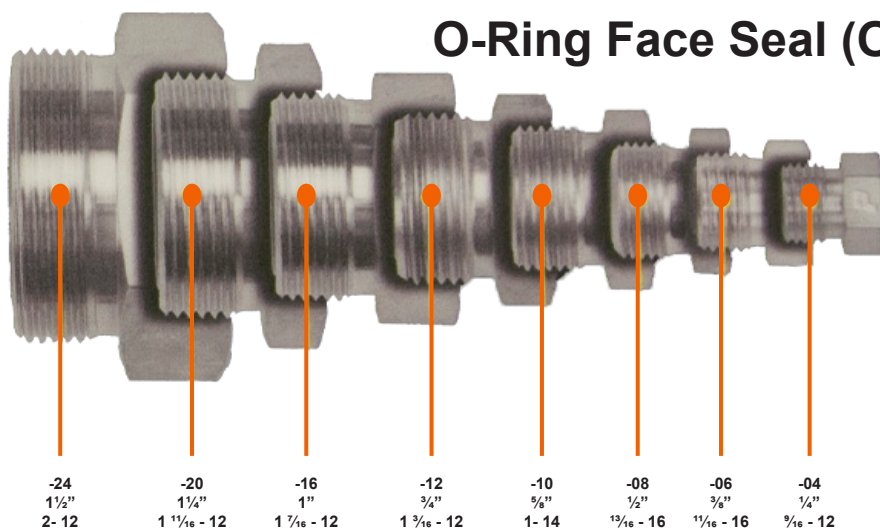
## O-Ring Boss (ORB)



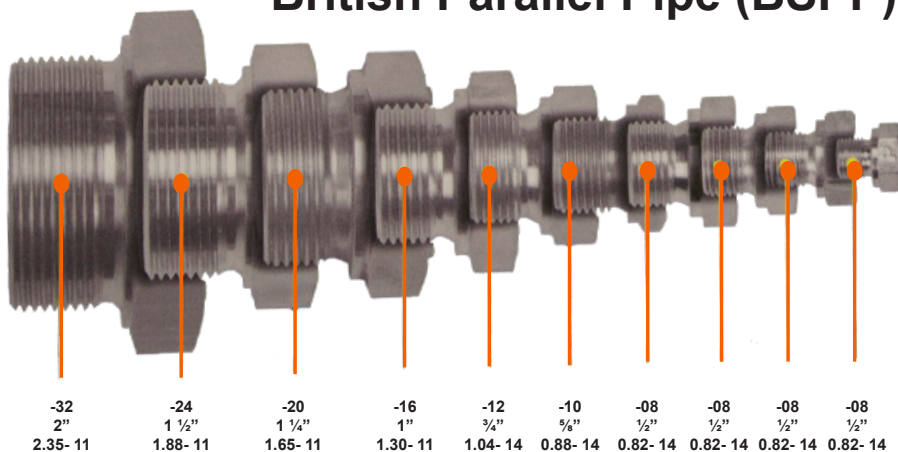
## DIN Metric



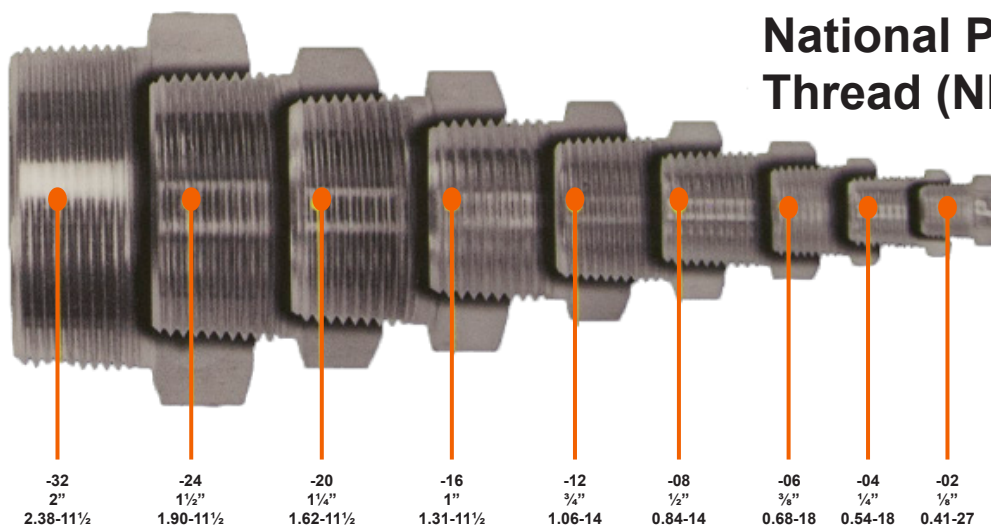
## O-Ring Face Seal (ORFS)



## British Parallel Pipe (BSPP)



## National Pipe Thread (NPT)



## Hydraulic Tubing

East Coast Hydraulics carries hydraulic tubing in both Imperial standard and Metric measurements.

Hydraulic tubing provides a way to transport fluids in hydraulic systems from one component to another. They can be used in hydraulic systems when the conditions of the equipment allow it. Tubes can be ideally installed in equipment when there is no space limitation and the movement, noise and vibration of the machine is minimal. Hydraulic tubing offers several advantages over hoses, as they can work in higher operating temperatures and required less maintenance.

All tubing include M&R Certificates upon request.



Hydraulic Tubing Metric

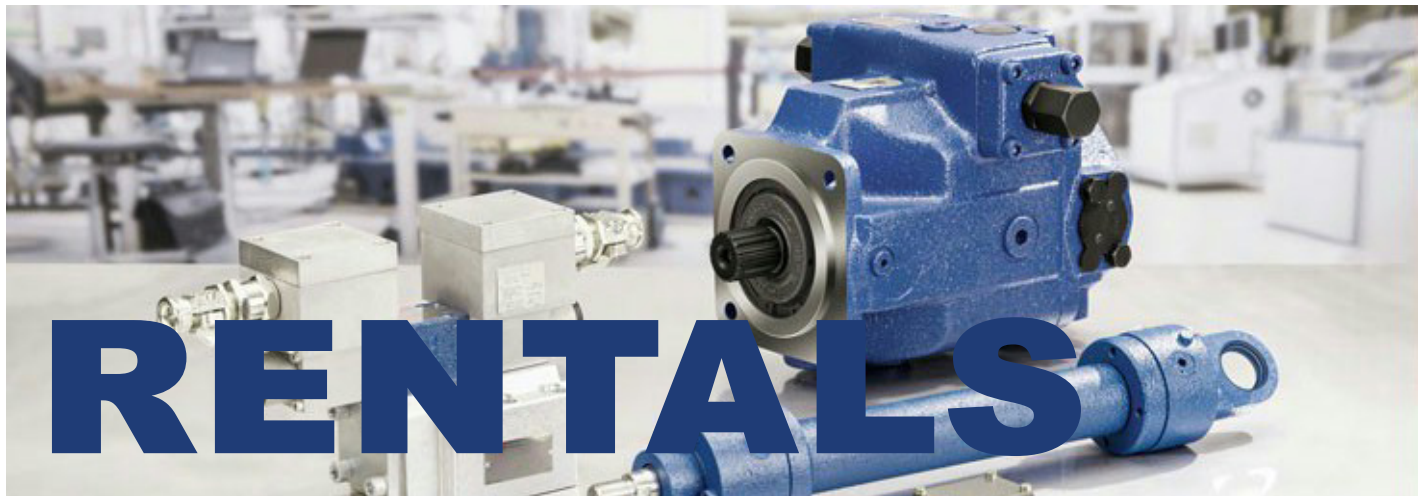
Length (m)	Diameter (mm)	Wall Thickness (mm)
6m	10mm	1.5mm
6m	12mm	1.5mm
6m	14mm	1.5mm
6m	14mm	2.0mm
6m	15mm	1.5mm
6m	16mm	2.0mm
6m	18mm	1.5mm
6m	20mm	2.0mm
6m	22mm	2.0mm
6m	25mm	2.0mm
6m	25mm	2.5mm
6m	28mm	2.0mm
6m	30mm	3.0mm
6m	35mm	3.0mm
6m	38mm	4.0mm
6m	42mm	3.0mm
6m	8mm	1.0mm

Hydraulic Tubing Standard

Length (ft)	Diameter (in)	Wall Thickness (in)
20ft	1 1/2"	0.83"
20ft	1 1/2"	0.95"
20ft	1 1/4"	0.95"
20ft	1 1/4"	.120"
20ft	1 1/4"	.65"
20ft	1"	.095"
20ft	1/2"	.065"
20ft	1/4"	.049"
20ft	3/4"	.065"
20ft	3/8"	.065"
20ft	5/8"	.065"

## EAST COAST HYDRAULICS

HYDRAULICS | HOSE & FITTINGS | CYLINDERS

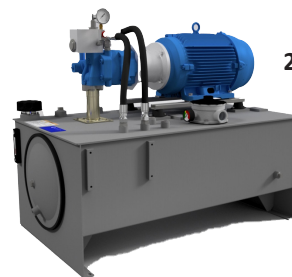


East Coast Hydraulics has an expansive inventory of rental equipment including hydraulic power units, mobile and stationary, up to 75 HP. We have a full contingency of hydraulic jacks and pumps, as well as a full inventory of hydraulic and pneumatic torquewrenches. As well we have a variety of other tools available. Drop in or call in and ask.

### Hydraulic Climbing Jacks



### Hydraulic Power Units



20 HP Medium-Pressure Hydraulic Power Unit



Honda 5.5 hp -5 GPM Power Units

## Torque Tools LP Series



- Made in the USA
- Ultra compact design
- Great for going over long studs!
- Calibrated n.i.s.t. accuracy to +/- 3%
- Interchangeable ratchet links
- Available up to 31,000 ft lbs
- Spring retract for super easy mating
- 100% compatible with titan LP tools

Model Number	Units	LP 2	LP 4	LP 8	LP 16	LP 32
Range of Hex Sizes A/F	(In) (mm)	3/4 to 2-3/8 16 to 60	7/8 to 3-1/8 22 to 80	1-1/4 to 4-1/2 31 to 115	1-5/8 to 5 41 to 127	2-3/16 to 6-1/8 56 to 155
Torque Range	(ft-lb) (n-m)	268 to 1826 363 to 2476	568 to 3788 770 to 5137	1070 to 8024 1457 to 10881	2360 to 16231 3200 to 22000	4896 to 32640 6639 to 44250
Cylinder Weight	(lb) (kg)	3.45 1.56	5.8 2.63	10.2 4.62	15.5 7.03	18 8.16
Range of Link Weight	(lb) (kg)	2.20 to 3.50 1.00 to 1.58	5.25 to 7.50 2.38 to 3.40	11.40 to 14.10 5.17 to 6.39	19.70 to 27.60 8.93 to 12.51	32.00 to 99.00 14.50 to 44.90
Dimensions						
L1 Maximum Reaction Reach	(in) (mm)	7.00 177.80	8.41 213.69	11.31 287.32	14.00 355.60	16.00 406.40
L2 Overall Length	(in) (mm)	8.90 226.06	10.70 271.78	14.27 362.59	17.95 455.93	19.25 488.95
H1- Center of Bolt to Top of Tool	(in) (mm)	3.86 98.17	4.77 121.29	6.16 156.67	7.25 184.15	10.50 266.70
H2 Back End Height	(in) (mm)	3.45 87.63	3.78 96.14	6.05 153.67	8.50 215.9	10.90 276.86
W1-Tool Width at Link	(in) (mm)	1.25 31.75	1.62 41.28	2.10 53.34	2.34 59.69	2.55 64.77
W2- Tool Width at Cylinder	(in) (mm)	1.25 31.75	1.75 44.45	2.10 53.34	2.45 62.23	2.80 71.12
R- Tool Radius around Bolt	(in) (mm)	1.03 to 1.75 26.16 to 44.48	1.31 to 2.30 33.32 to 58.47	1.72 to 2.95 43.82 to 74.98	1.95 to 3.50 49.53 to 88.9	2.50 to 4.75 63.5 to 120.65

## Torque Tools T Series



- Made in the usa
- Weight compact design
- Made from aircraft aluminum
- Use with standard impact sockets
- Torque up to 50,000 ft lbs
- 12 Different models to suit your needs
- Calibrated n.I.S.T cert +/- 3%
- Qr code for field retrieval of cal cert
- Anti reverse mechanism eliminates bolt windup

NIB - .5 Model	Units	Height	Width	Length	Radius	Drive	Weight	Torque	
								Min	Max
NIB - .5	(in)	3.00	1.32	3.00	0.65	.5	1.85 lbs	55 ft-lbs	397 ft-lbs
	(mm)	76.20	33.53	76.20	16.51	13	0.84 kg	81 Nm	538 Nm
NIB - .7	(in)	4.25	1.62	3.96	.081	.75	2.70 lbs	123 ft-lbs	822 ft-lbs
	(mm)	108	41	101	21	19	1.23 kg	167 Nm	1115 Nm
NIB - 1	(in)	4.90	1.97	4.88	0.98	.75	3.95 lbs	201 ft-lbs	1,340 ft-lbs
	(mm)	124	50	124	25	19	1.79 kg	273 Nm	1817 Nm
NIB - 3	(in)	6.12	2.63	6.34	1.31	1	8.30 lbs	484 ft-lbs	3,230 ft-lbs
	(mm)	155	67	161	33	25	3.77 kg	656 Nm	4379 Nm
NIB - 5	(in)	7.22	3.16	7.61	1.57	1	14.20 lbs	838 ft-lbs	5,589 ft-lbs
	(mm)	183	80	193	40	25	6.44 kg	1,136 Nm	7578 Nm
NIB - 8	(in)	6.50	3.57	7.70	1.76	1.5	24.95 lbs	1,200 ft-lbs	8,000 ft-lbs
	(mm)	165.10	90.68	195.58	44.70	38	11.34 kg	1,627 Nm	10,846 Nm
NIB - 10	(in)	8.80	3.95	9.51	1.96	1.5	24.80 lbs	1,728 ft-lbs	11,519 ft-lbs
	(mm)	224	100	242	50	38	11.25 kg	2,343 Nm	15,618 Nm
NIB - 15	(in)	9.67	4.38	10.55	2.18	2.5	36.00 lbs	2,388 ft-lbs	15,920 ft-lbs
	(mm)	246	111	268	55	64	16.33 kg	3,238 Nm	21,585 Nm
NIB - 20	(in)	10.24	4.73	11.41	2.36	2.5	43.40 lbs	2,964 ft-lbs	19,757 ft-lbs
	(mm)	260	120	290	60	64	19.69 kg	4,019 Nm	26,787 Nm
NIB - 25	(in)	9.60	5.25	11.80	2.60	2.5	68.5 lbs	3,960 ft-lbs	25,890 ft-lbs
	(mm)	243.84	133.35	299.72	66.04	64	31.14 kg	5,265 Nm	35,102 Nm
NIB - 35	(in)	12.42	5.82	14.03	2.90	2.5	77.45 lbs	5,564 ft-lbs	37,095 ft-lbs
	(mm)	315	148	356	74	64	35.13 kg	7,544 Nm	50,294 Nm
NIB - 50	(in)	11.00	6.57	15.50	3.25	2.5	124 lbs	7,875 ft-lbs	52,500 ft-lbs
	(mm)	279.40	166.88	393.70	82.55	64	56.36 kg	10,677 Nm	71,180 Nm

## Oil Filtration Carts



# ARCTIC

SNOWPLOWS • CHASSE-NEIGE





# EAST COAST HYDRAULICS

HYDRAULICS | HOSE & FITTINGS | CYLINDERS

9 Sagona, Mt. Pearl

709-747-2121

[eastcoasthydraulics.ca](http://eastcoasthydraulics.ca)

[info@eastcoasthydraulics.ca](mailto:info@eastcoasthydraulics.ca)